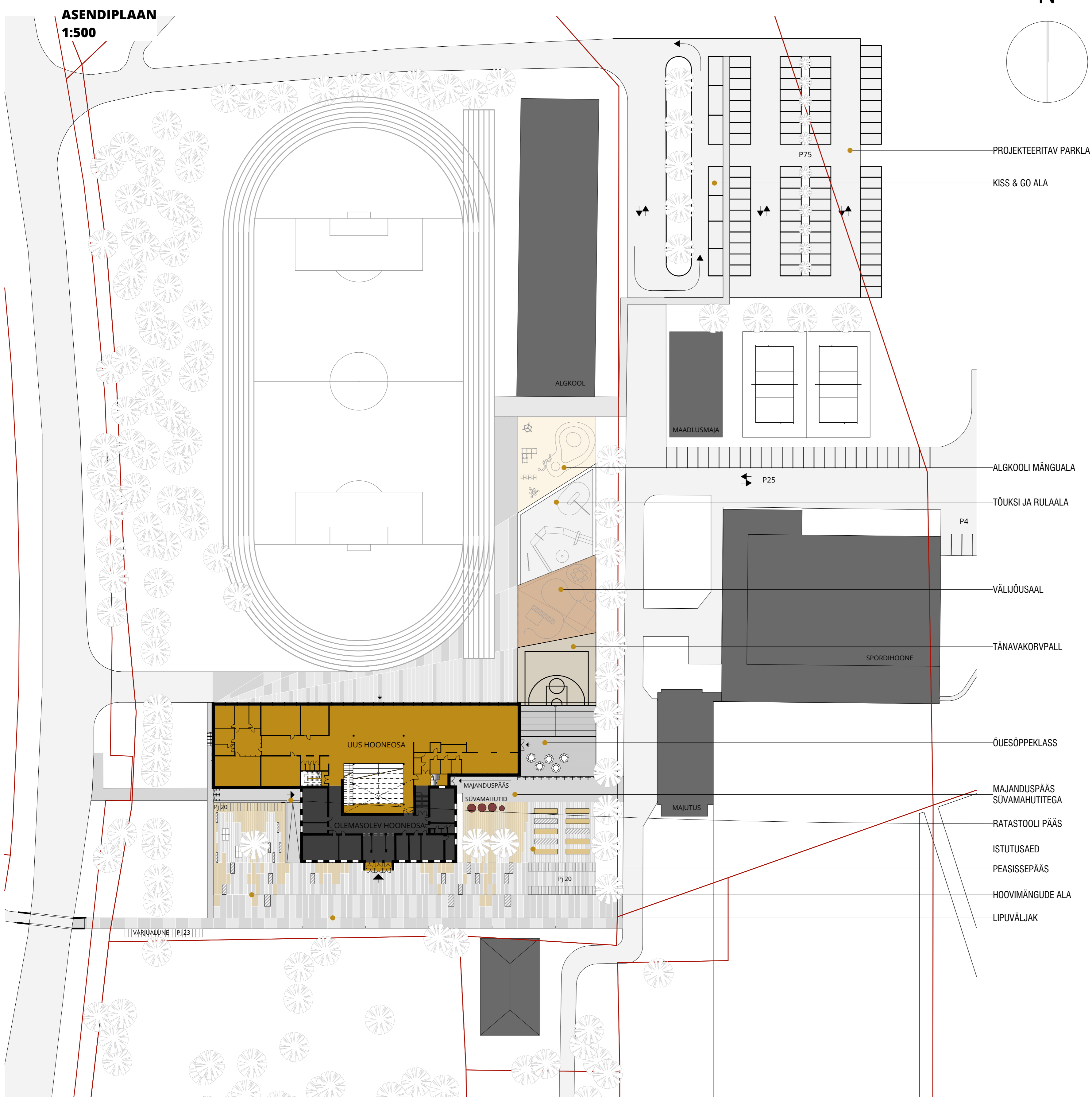




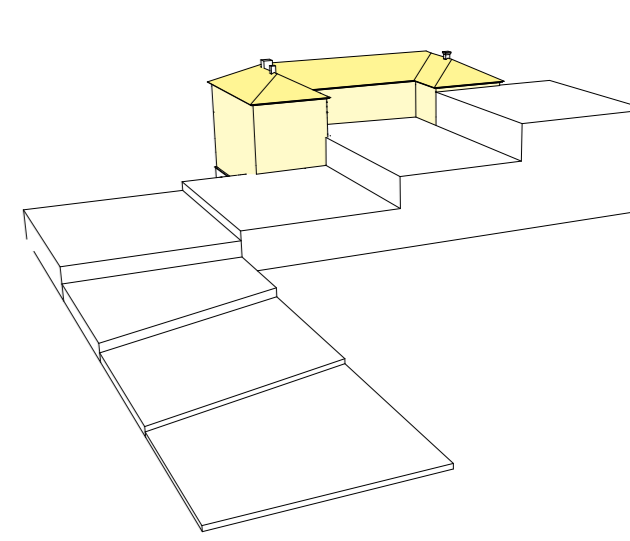
ASENDIPLAAN 1:500



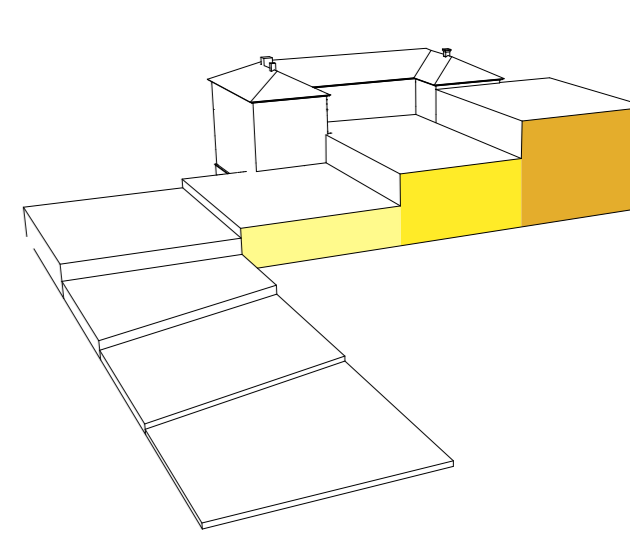
~~JUURDEHITUS~~

TERVIKLIK TOIMIV
KOOLIMAJA

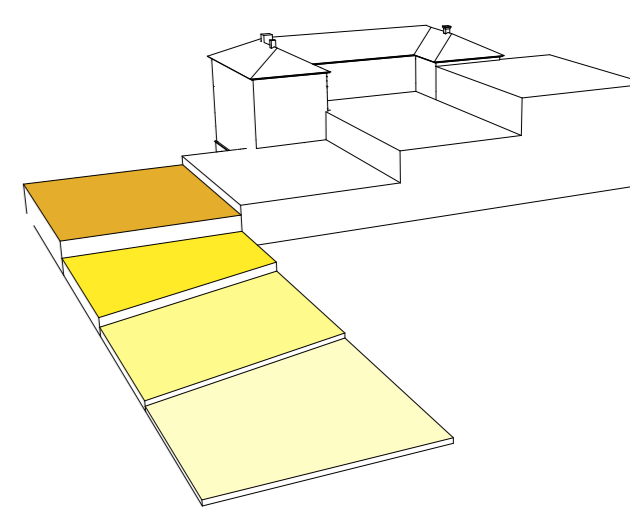
Lähteidee koolihoone laiendamisel on tervikliku toimiva hoone loomine, mitte juurdehituse projekteerimine.



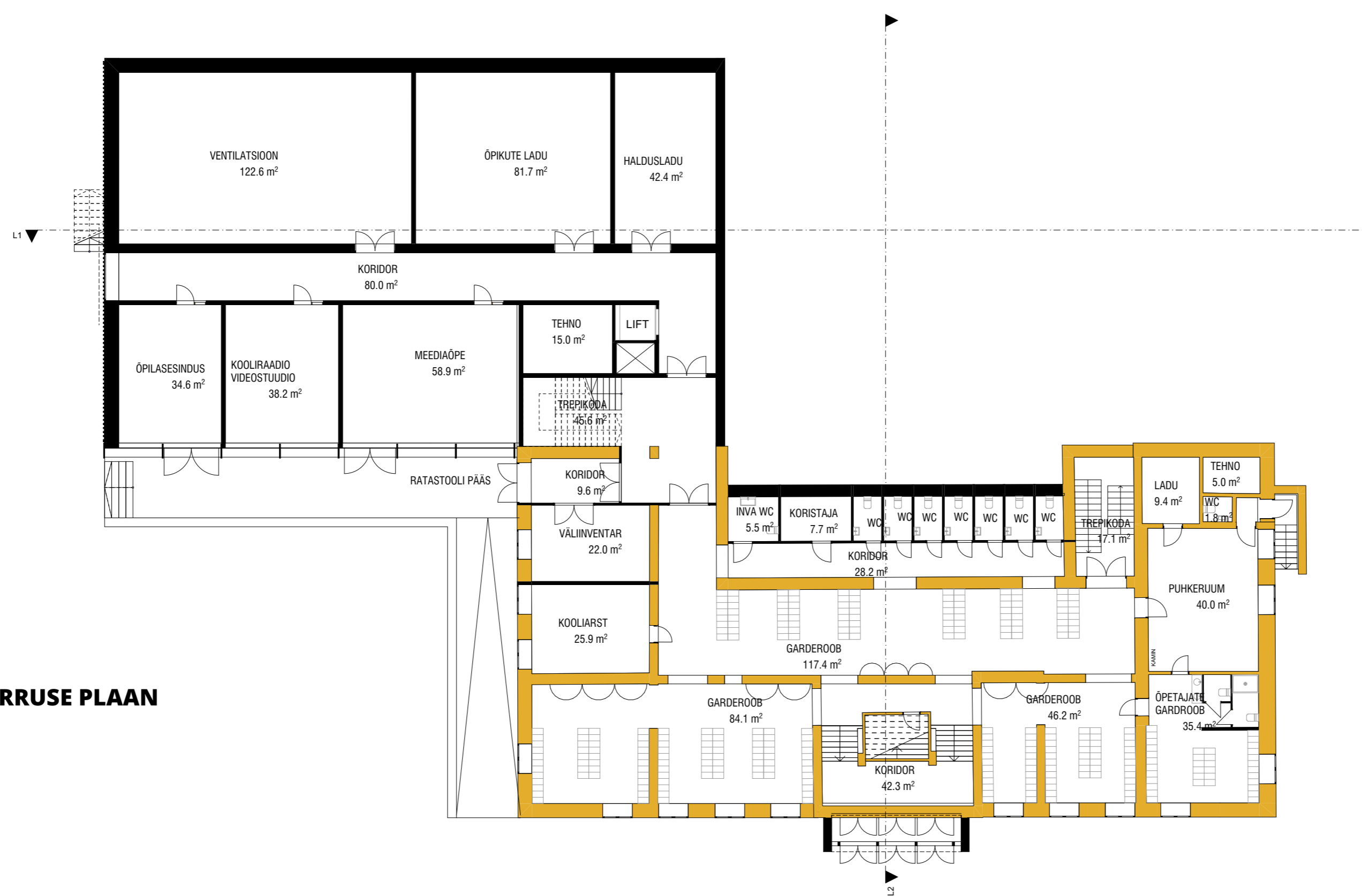
Vorm, mis otsib kontakti ja seob end ümbritsevasse keskkonda. Vormikeel on teotuslikult lihtne ja ei koorma keskkonda, moodustades pigem korrastava mõjuobjekti.



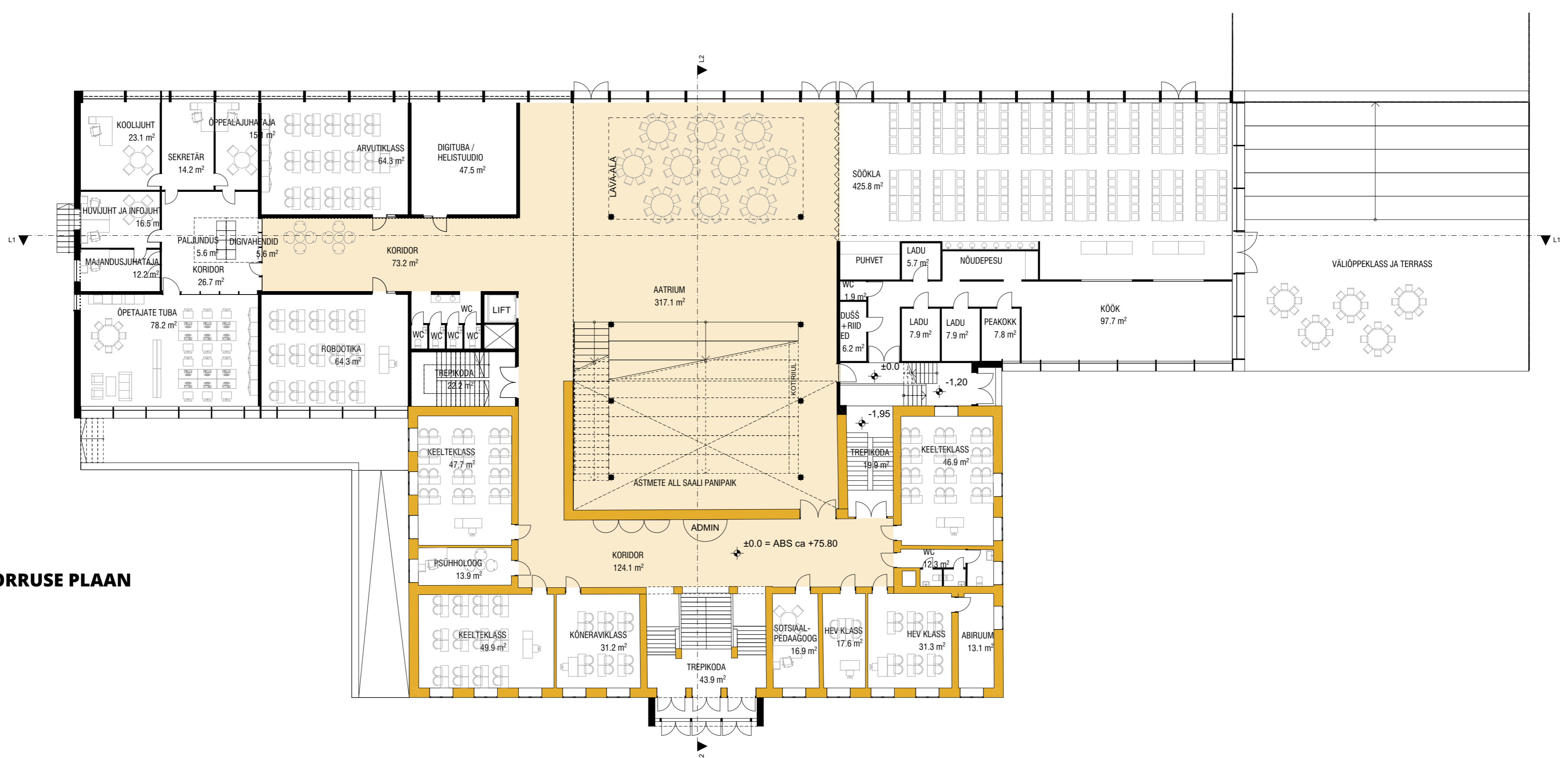
Projekteeritav hoonemaht jaotub tinglikult kolmeks - kõrgem klasside maht, keskne hoovi avatud aatriumiala ja söökla



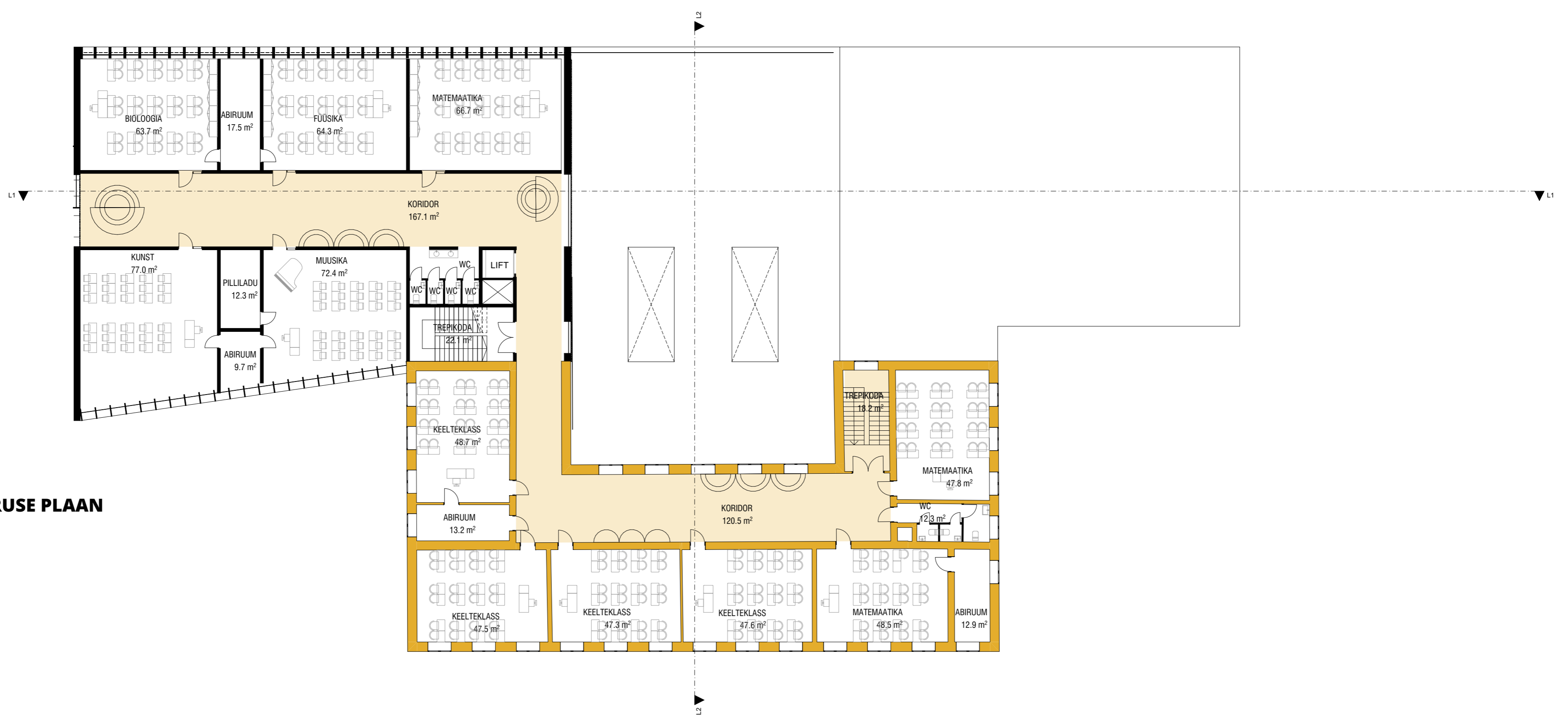
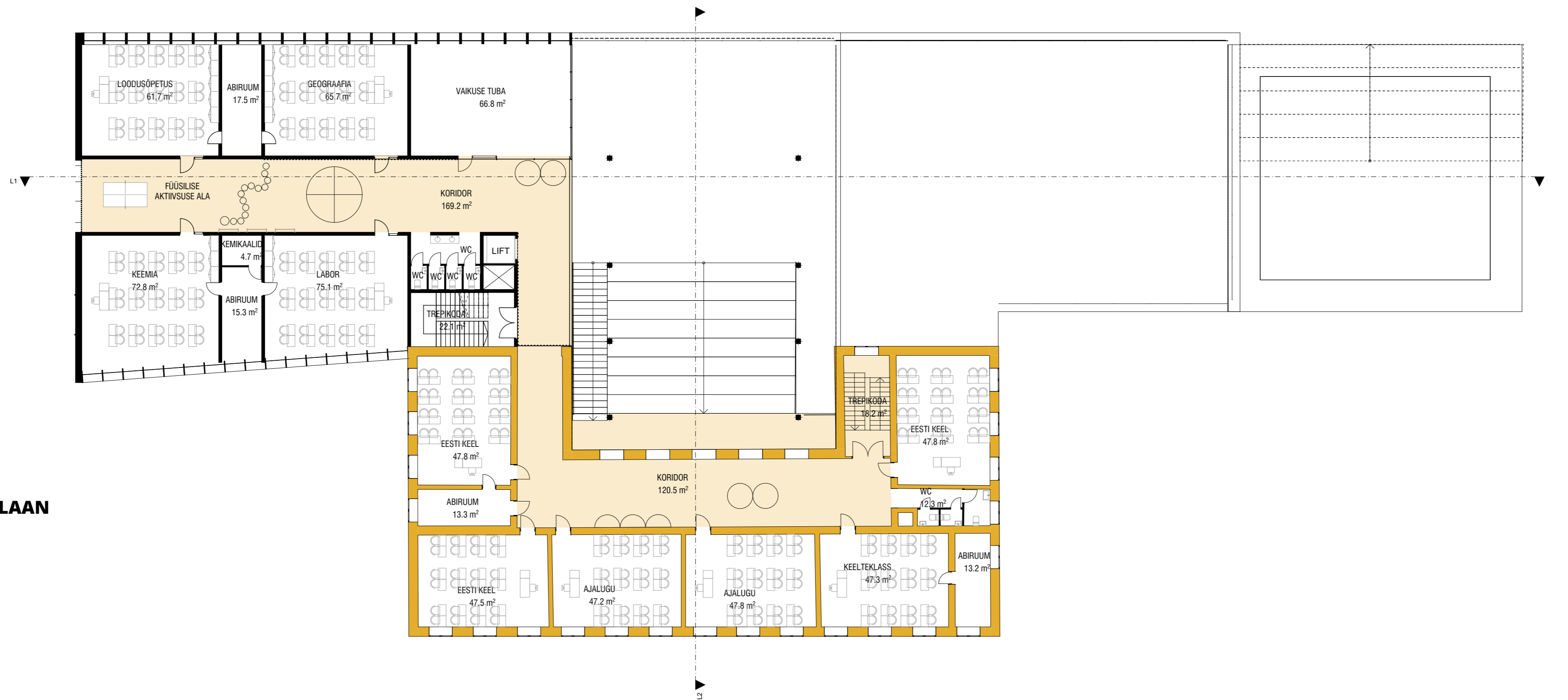
Juurdehitatav maht on selge astmeliselt alaneva vormiga maht, mille mõju ulatub hoonest jätkuna edasi ümbritsevasse keskkonda. Terrassidena alanevad puhke- ja mängualad moodustavad nii karakterse terviku.

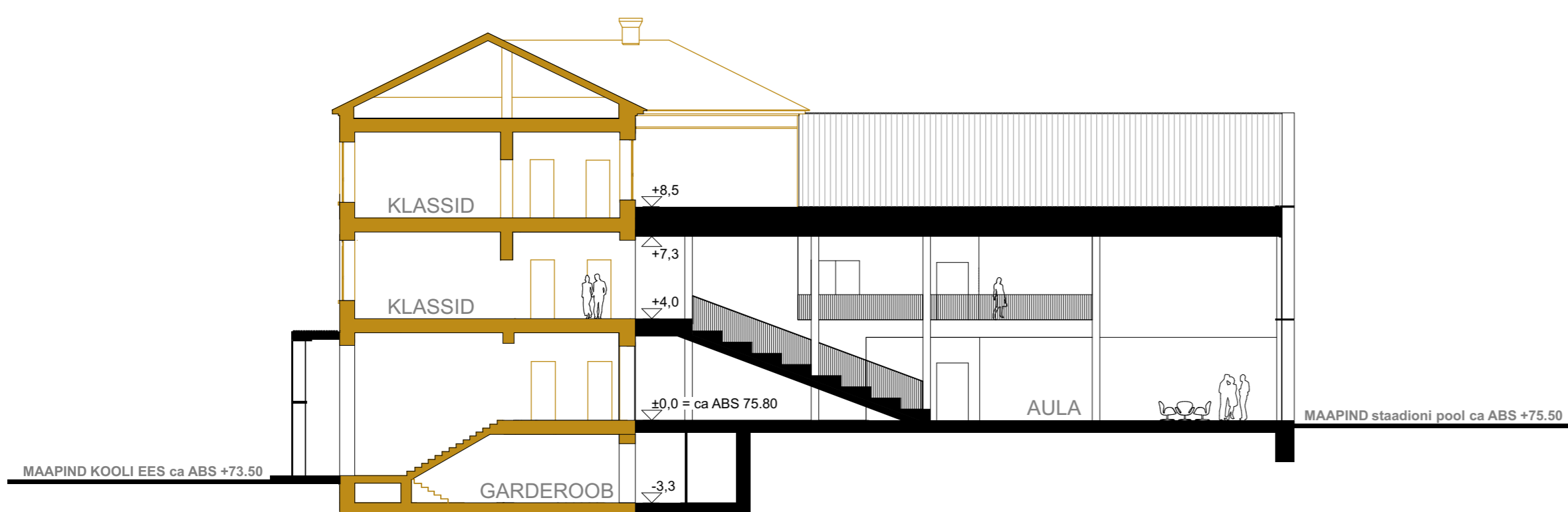


KOOLI KELDRIKORRUSE PLAAN
1:200



KOOLI ESIMISE KORRUSE PLAAN
1:200

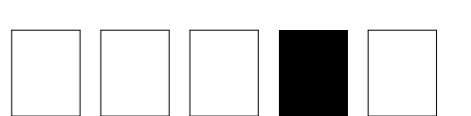




LÕIGE 1
1:200

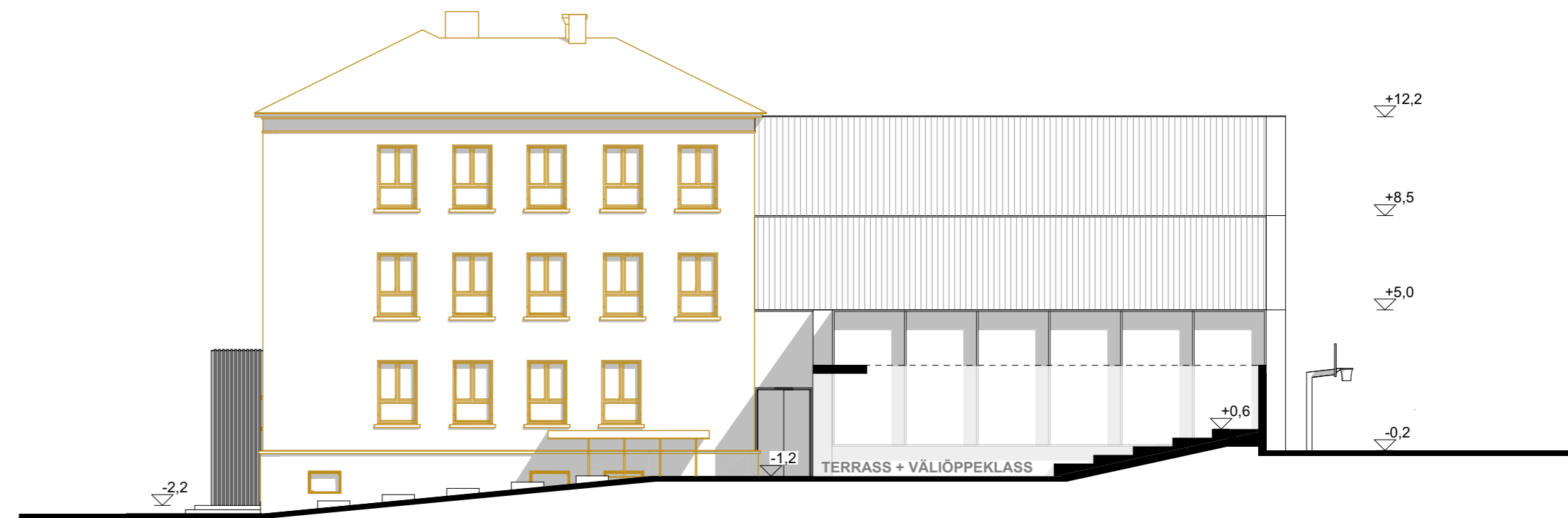


LÕIGE 2
1:200

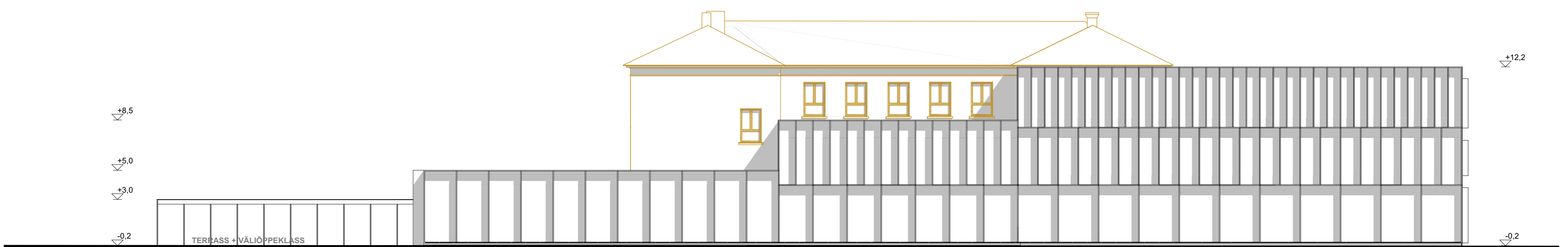




VAADE LÄÄNEST 1:200



VAADE IDAST 1:200



VAADE PÕHJAST 1:200



VAADE LÕUNAST 1:200