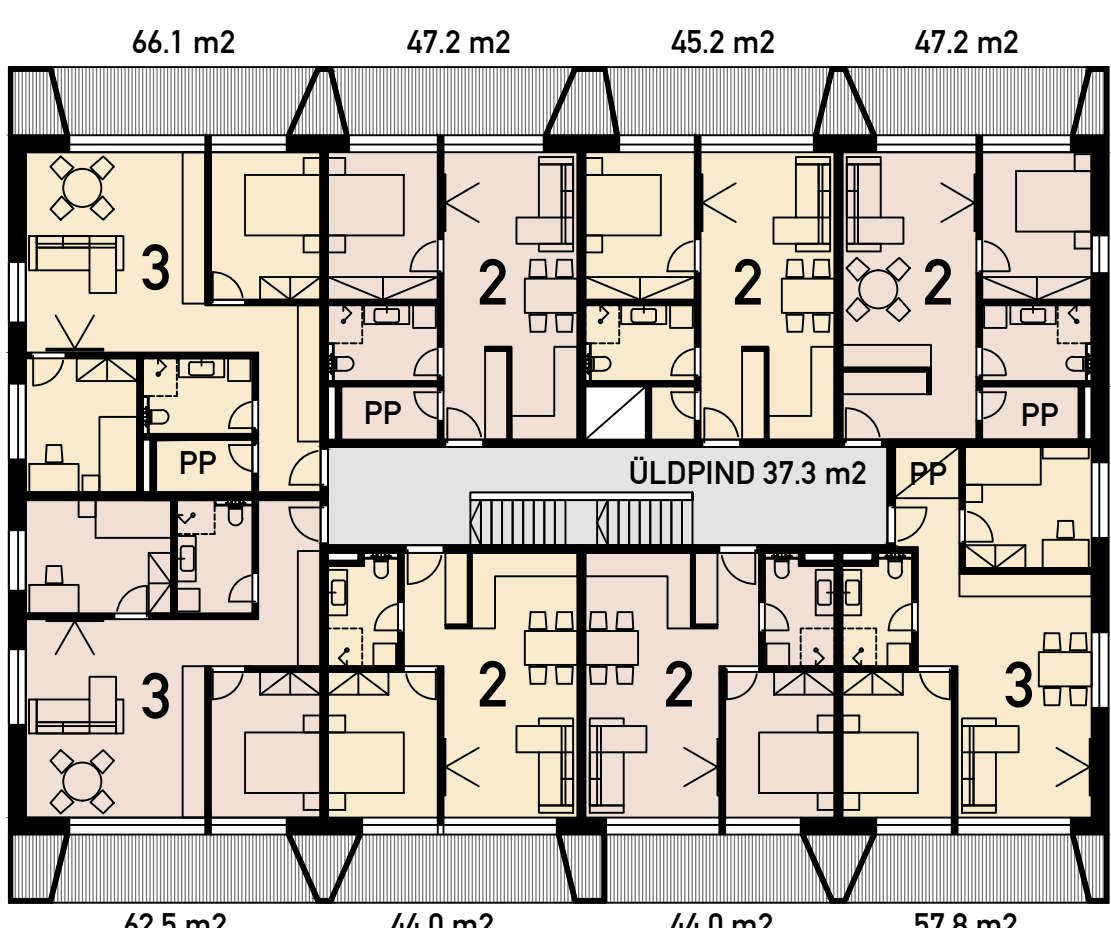
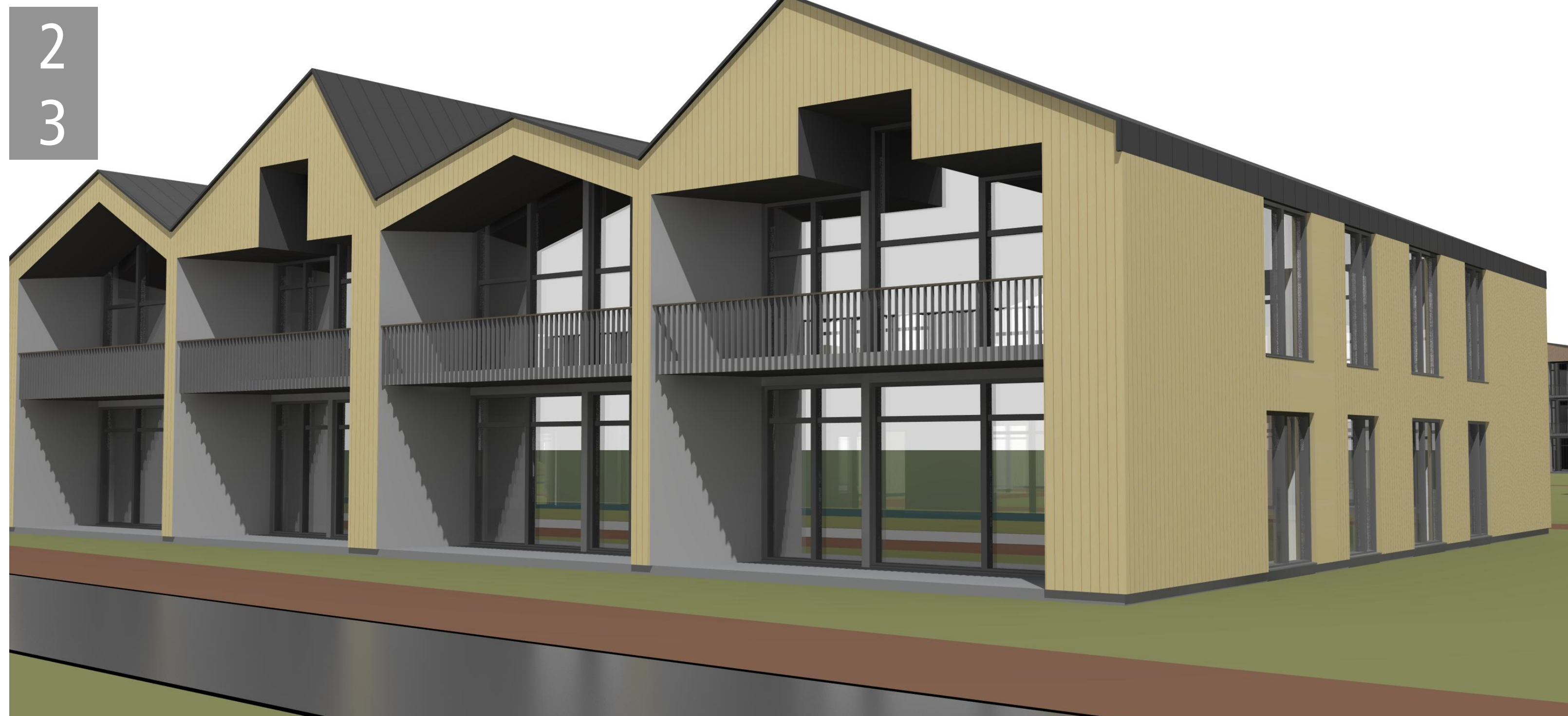
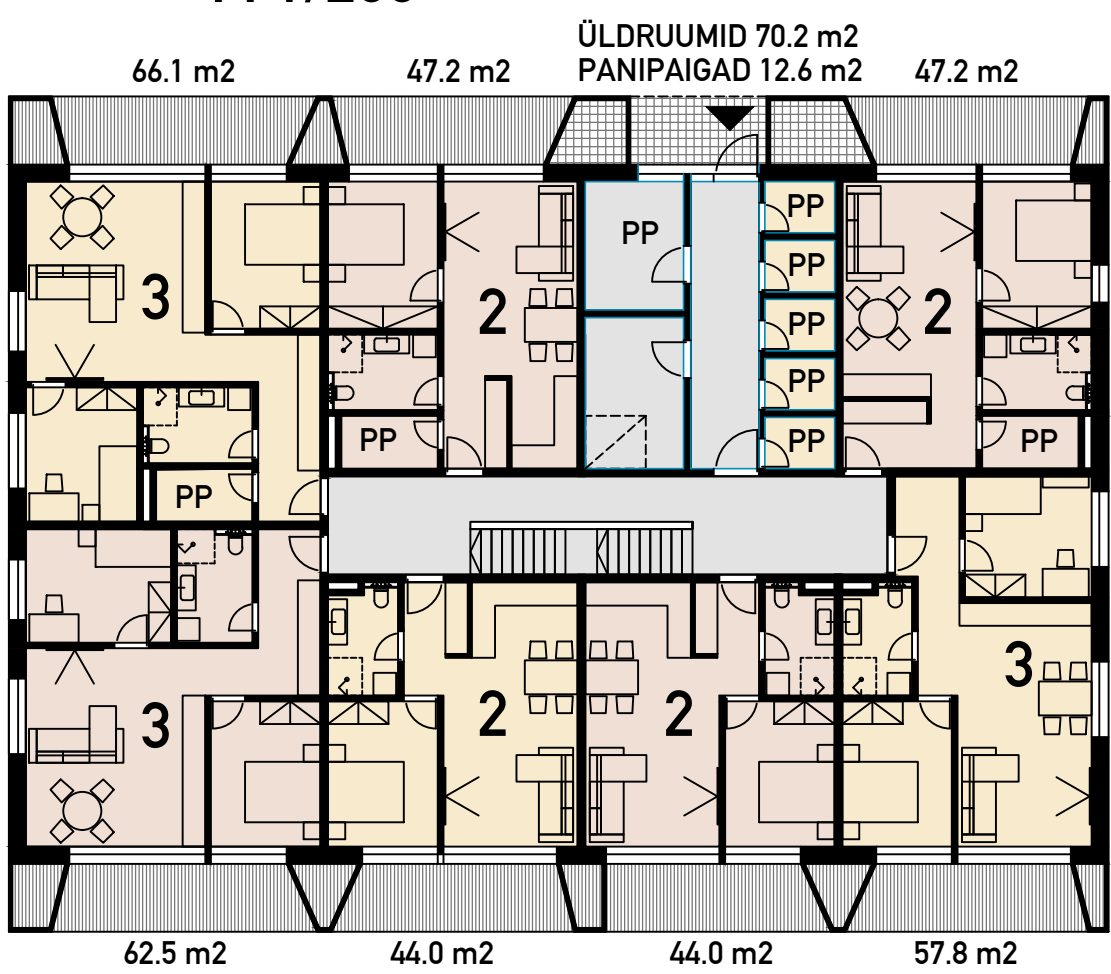


# AGUL



M 1/200



V MAJA:  
HOONEALUNE PIND - 648 m<sup>2</sup>  
KORRUSEID 2 VÕI 3

V

1.KRS:  
2 TOALISI - 4 TK  
3 TOALISI - 3 TK

2.KRS:  
2 TOALISI - 5 TK  
3 TOALISI - 3 TK

3.KRS:  
2 TOALISI - 3 TK  
3 TOALISI - 3 TK  
4 TOALISI - 1 TK

V MAJA 2 KORRUST:  
elamispid - 795.7 m<sup>2</sup>  
üldruumide suletud netopind - 107.5 m<sup>2</sup>  
suletud netopind kokku - 903.2 m<sup>2</sup>  
müüdava pinna % - 88.1

V MAJA 3 KORRUST:  
elamispid - 1209.9 m<sup>2</sup>  
üldruumide suletud netopind - 144.8 m<sup>2</sup>  
suletud netopind kokku - 1354.7 m<sup>2</sup>  
müüdava pinna % - 89.3

