

# 1000ISLANDS



## KONTEKST

Eesti on loodusesõprade unistustemaa. See on koht, kus maa kohtub merega, rabad on põimitud põlismetsa, põldude ja jõgede ja järvedega. Eestit võib vabalt nimetada rabade kuningriigiks, kuna ligikaudu veerand riigist on kaetud soodega.

Eestis on puutumatud rannad, üle 1000 väikesaare, pärandmaastikud, põlismetsad, sood, rabad, loodusliku jõesängiga loodetavad jõed, mis on elupaigaks paljudele haruldastele loomade ja linnuliikidele.

## CONTEXT

Estonia is a dreamland for nature lovers. This is the place where the land meets the sea, bogs are interspersed with virgin forest, fields and rivers and lakes. Estonia might easily be called the kingdom of bogs since approximately one quarter of the country is covered in marshes.

Estonia has untouched beaches, more than 1,000 small islands, heritage landscapes, primeval forests, swamps, bogs, winding rivers with natural riverbeds which are all habitats for many rare species of animals and birds.



## EESTI SAARED

Eestis on üle 2000 saare.

Eesti paljud saared pakuvad tohutult võlu ja iidset ajalugu, Eesti populaarseimad saared on Saaremaa, Hiiumaa, Kihnu, Ruhnu ja Vormsi.

Lääne-Eesti saarestik kuulub oma eheda miljöö, rahu ja jätkusuutliku eluviisi tõttu UNESCO inim- ja biosfääri kaitsealasse. Siia tulles saavad kõik nautida loodusest inspireeritud saarlaste toitu, kunsti ja käsitööd.

## ISLANDS OF ESTONIA

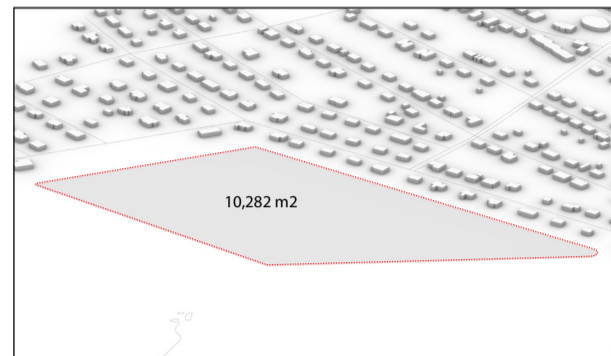
Estonia has over 2000 islands.

Estonia's many islands offer an enormous amount of charm and ancient history, with the most popular Estonian islands being Saaremaa, Hiiumaa, Kihnu, Ruhnu and Vormsi.

Because of the authentic setting, tranquillity and sustainable way of life the West Estonian Archipelago is part of UNESCO Man and Biosphere reserve. By coming here, everyone can enjoy food, art and crafts of the islanders inspired by nature.

“kõik, mida võite ette kujutada, on loodus juba loonud”  
- Albert Einstein  
“everything you can imagine, nature already has created”  
- Albert Einstein

## Kontseptsioonistrateegiad / Concept Strategies

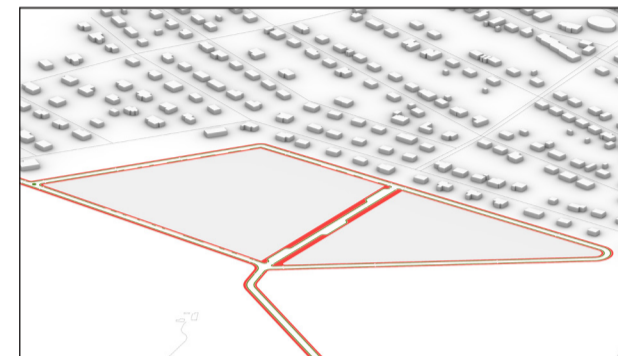


### 00 - SAIT

Koht asub Kagu-Eestis Tartumaal Vahil.

### 00 - SITE

The site is located in Vahi, Tartu County in south-eastern Estonia.

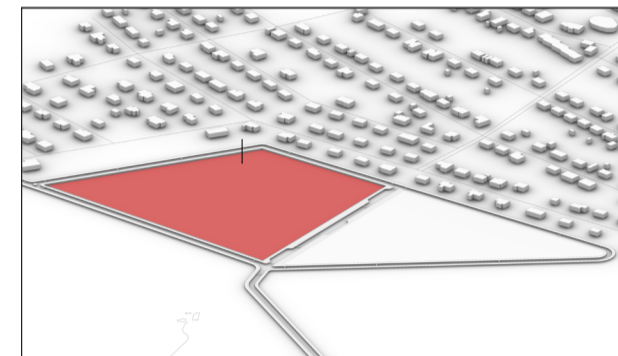


### 01 - SÕIDUKITE RINGLUS

Sõidukite ringlus on piiratud objekti perimeetriga, keskel on ühendus, mis jagab platsi kaheks.

### 01 - VEHICULAR CIRCULATION

The vehicular circulation has been limited to the perimeter of the site, with a connection in the middle, dividing the site into two.

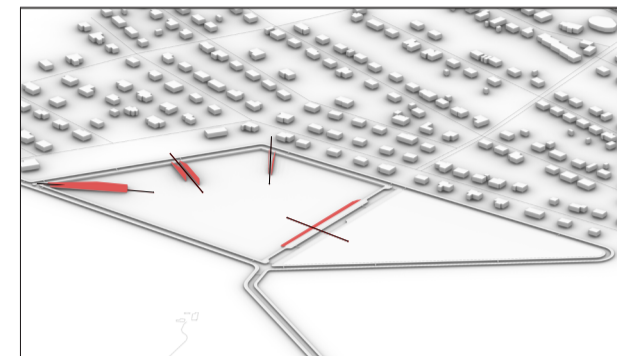


### 02 - NIKERDAMINE

Pool saidist kaevatakse välja, et luua uppunud väljak.

### 02 - CARVING OUT

The Half of the site is excavated in order to create a sunken piazza.

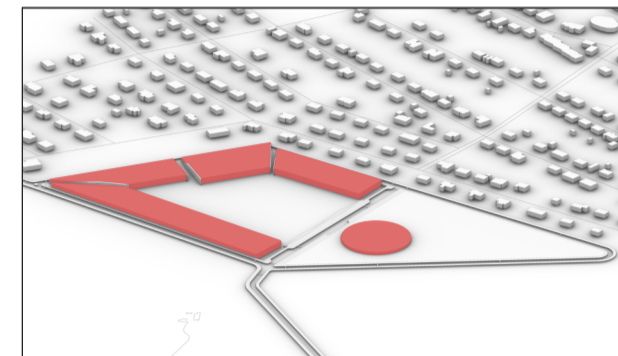


### 03 - SISENEMISPUNKTID

Otsesed sissepääsupunktid võeti kasutusele selleks, et luua tavalisi ja avarii sisse- ja väljapääsupunkte.

### 03 - ENTRY POINTS

Direct entry points were introduced in order to create regular & emergency entry-exit points.

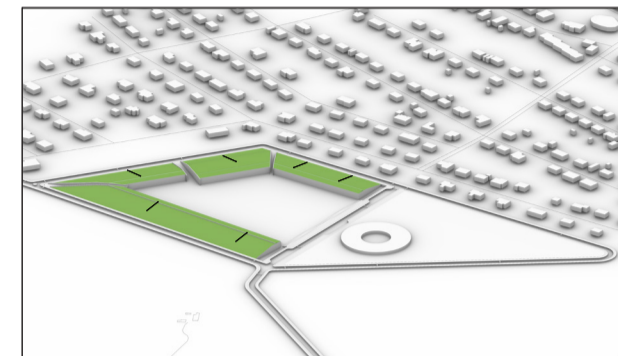


### 04 - MASSEERIMINE

Algklasside lavadele ja spordihoonele loodi osaliselt vajunud massid. Lisaks pressiti lasteaia jaoks välja ringmass.

### 04 - MASSING

Partially sunken masses were created for the elementary school stages and the sports hall. In addition, a circular mass was extruded for the kindergarten.

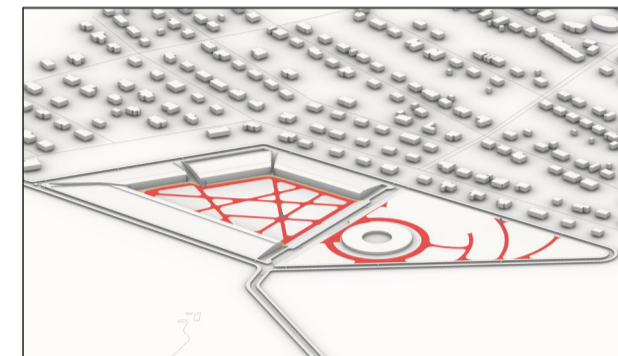


### 05 - ROHELINE NÕLV

Katus oli kaldu, et tekitada kasutajatele kindimisvõimeline roheline mägi.

### 05 - GREEN SLOPE

The roof was sloped in order to create a walk able green hill for the users.



### 06 - JALAKÄIJATE RINGKÄIK

Disain võimaldab kasutajal ohutu ja universaalse juurdepääsu peaaegu igale poole hoones, ilma et see oleks vastuolus sõidukite ringlusega.

### 06 - PEDESTRIAN CIRCULATION

The design allows the user to have a safe and universal access to almost any location in the building, with no conflicts with the vehicular circulation.

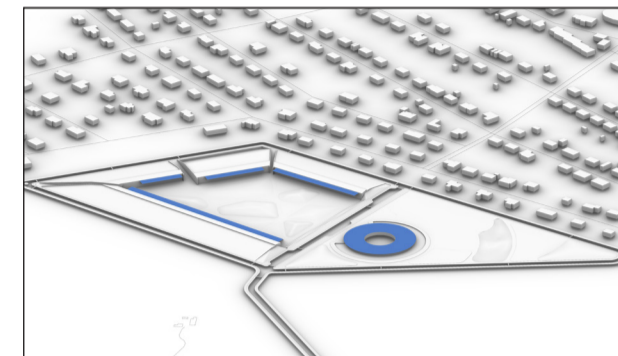


### 07 - ROHELISED SAARED

Rohked rohelised maatükid jäljendavad "Eesti saari".

### 07 - GREEN ISLANDS

The abundant green parcels mimic the 'islands of Estonia'.



### 08 - NUTIKAS KATUS JA VARIKATUSED

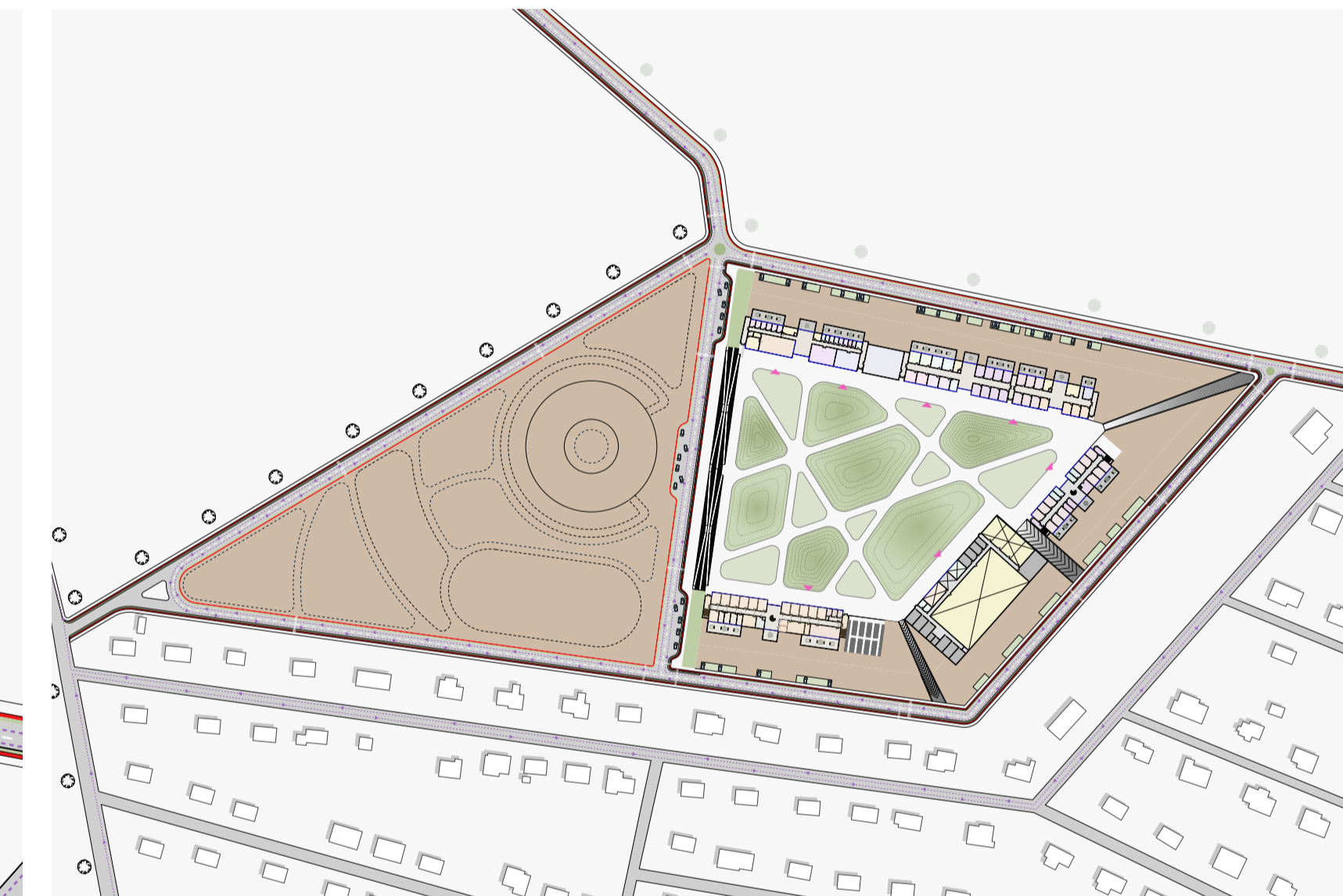
Hoone suudab oma energiavajaduse eest hoolt kanda, toota elektrit läbipaistvast klaasist PV varikatustest ja katusest.

### 08 - SMART ROOF & CANOPIES

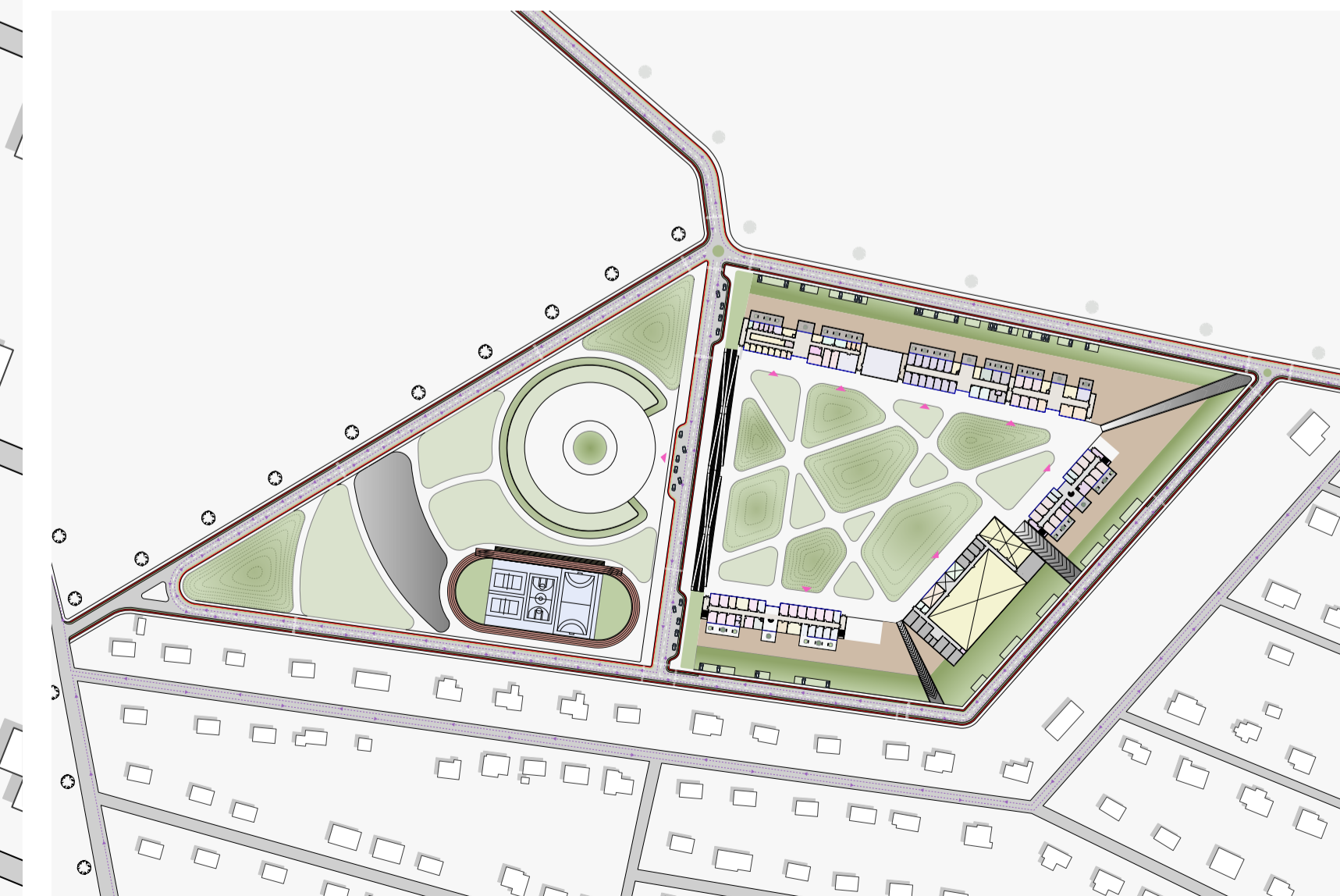
The building is capable of taking care of its energy requirements, by producing electricity from the transparent glass PV canopies and roof.



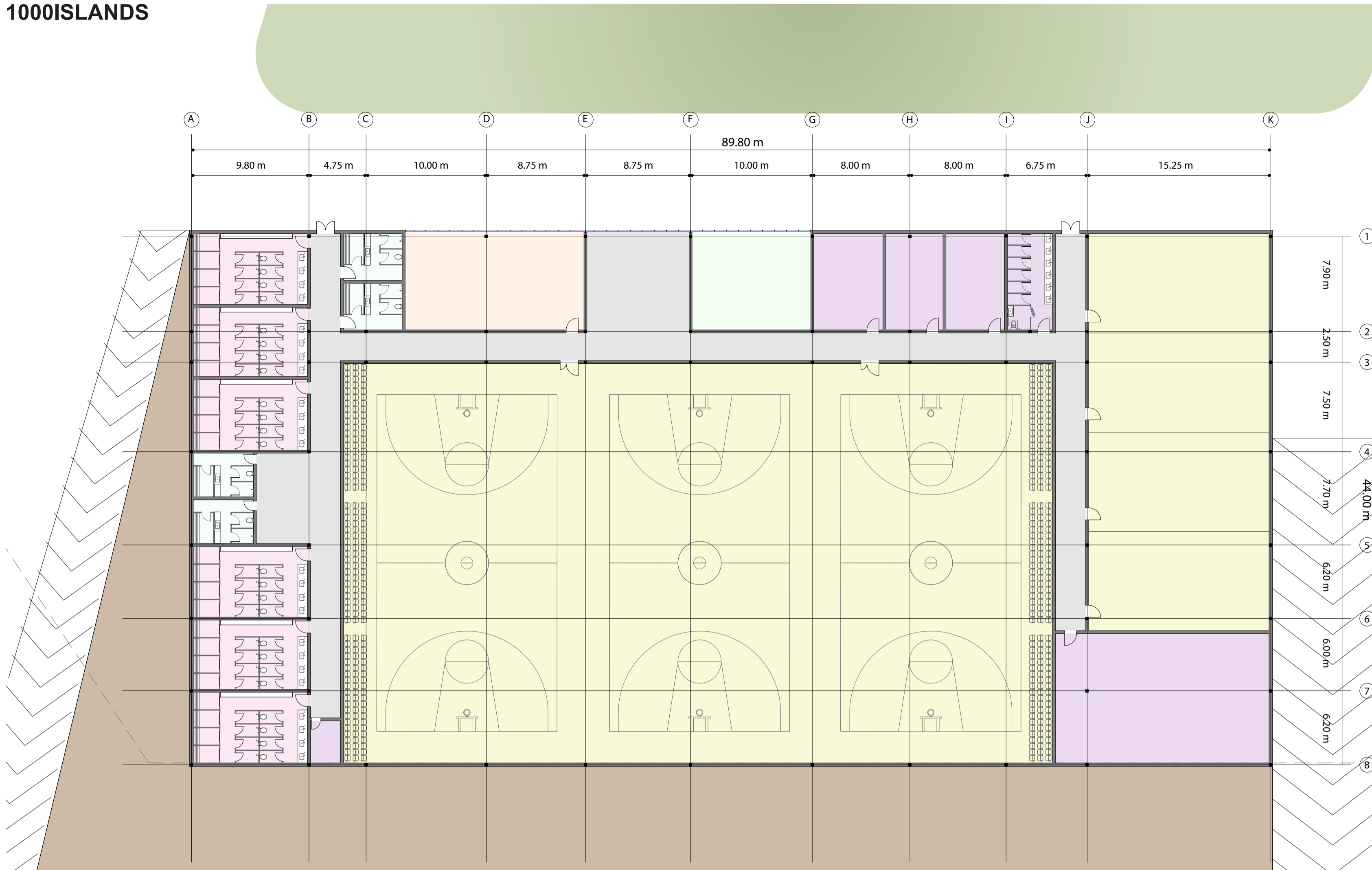
Laiendatud saidiplaan / Master Plan



Saidiplaan (Piazza tasand) / Site Plan (Piazza Level)



Saidiplaan (esimese korruse tase) / Site Plan (First Floor Level)

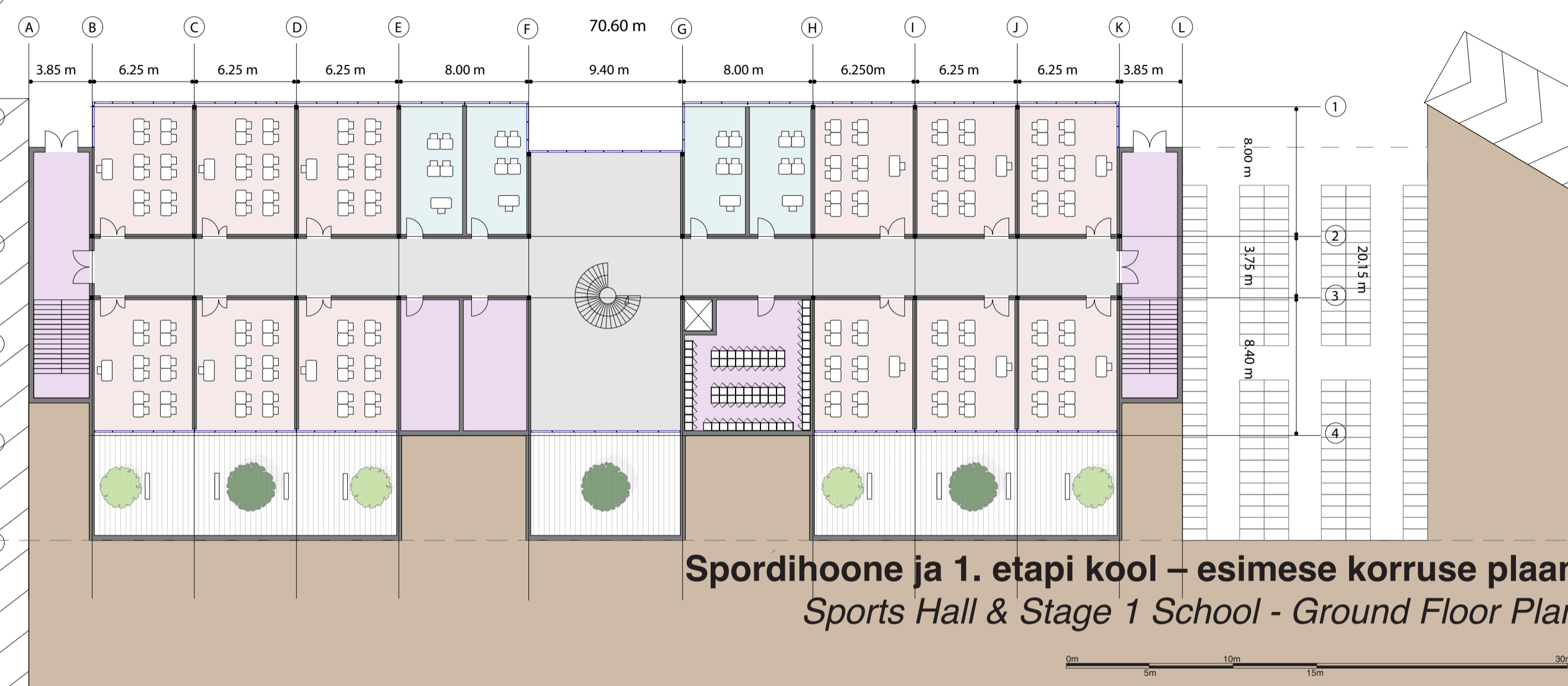
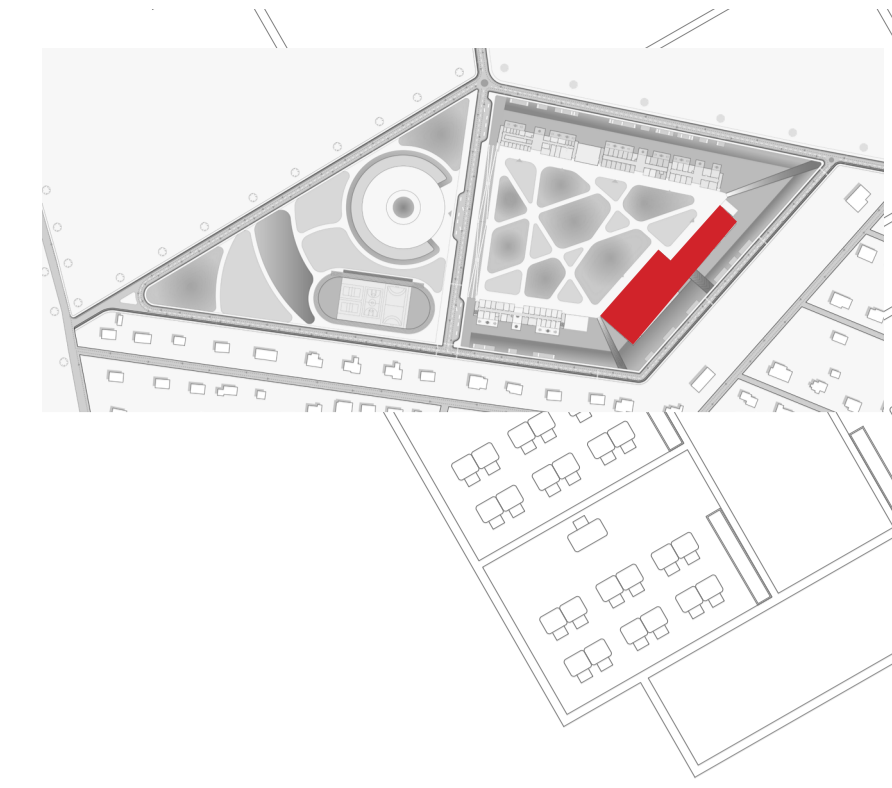


**Spordihoone  
Sports Hall**

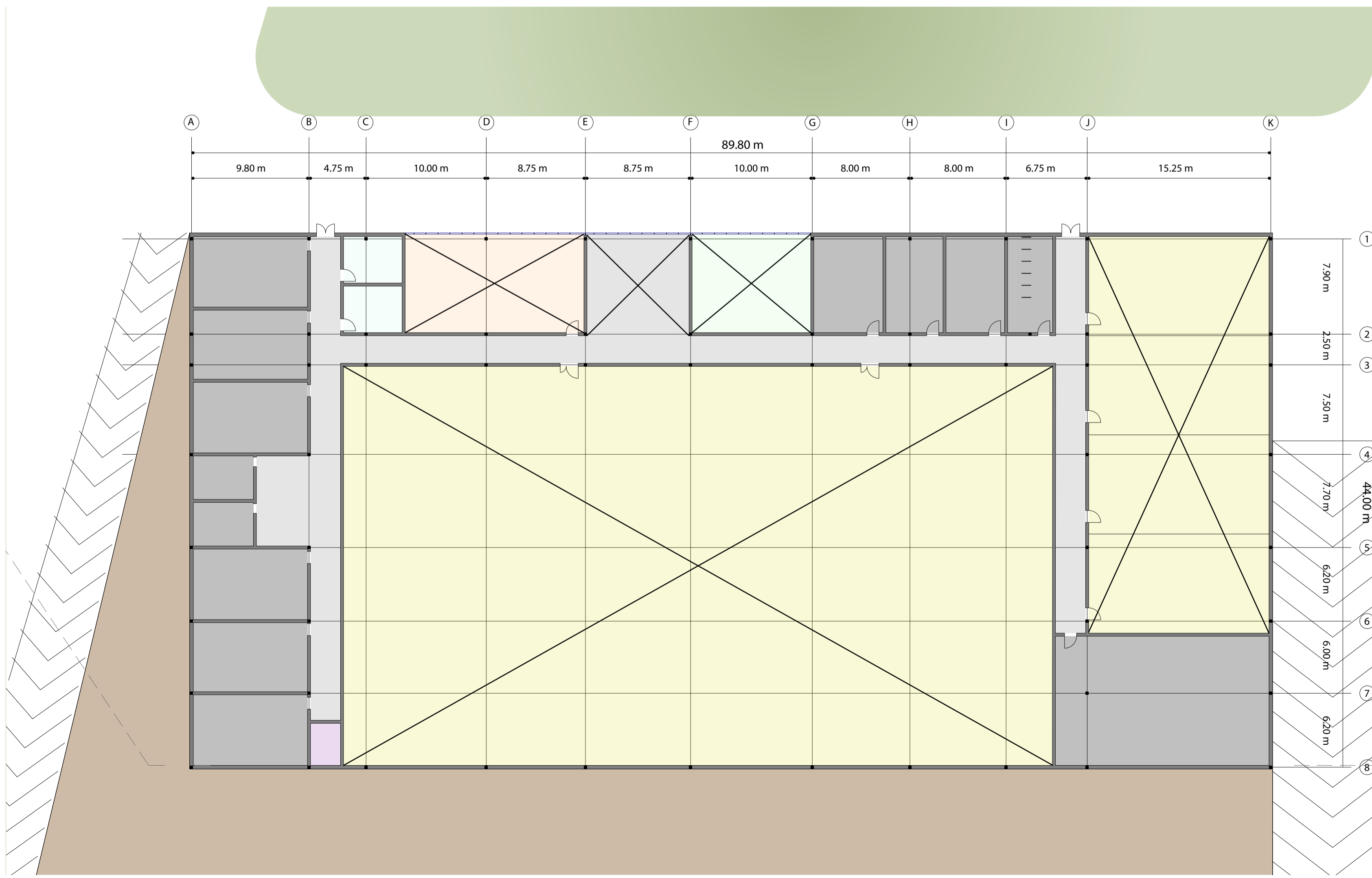
- Ballisaal  
Ballroom
- Inventari tuba  
Inventory Room
- Väikesed saalid  
Small halls
- Jõusaal  
Gym
- Riietusruumid  
Dressing Rooms
- Riietusruum (treener)  
Dressing Room (Coach)
- Kooliõpetajate kabinetid  
School teacher's offices
- Kohvik  
Cafe
- Puhastusruum  
Cleaning Room
- Tehnilised ruumid  
Technical Rooms
- Koridorid  
Corridors
- Staadioni varustus  
Stadium Equipment
- Fuajee  
Lobby

**1. etapi kool  
Stage 1 school**

- Koduklass  
Home Class
- Väike klass  
Small class
- Tiraaž  
Circulation
- Garderoob  
Wardrobe
- Koristusruumid  
Cleaning Rooms
- WC  
Toilets

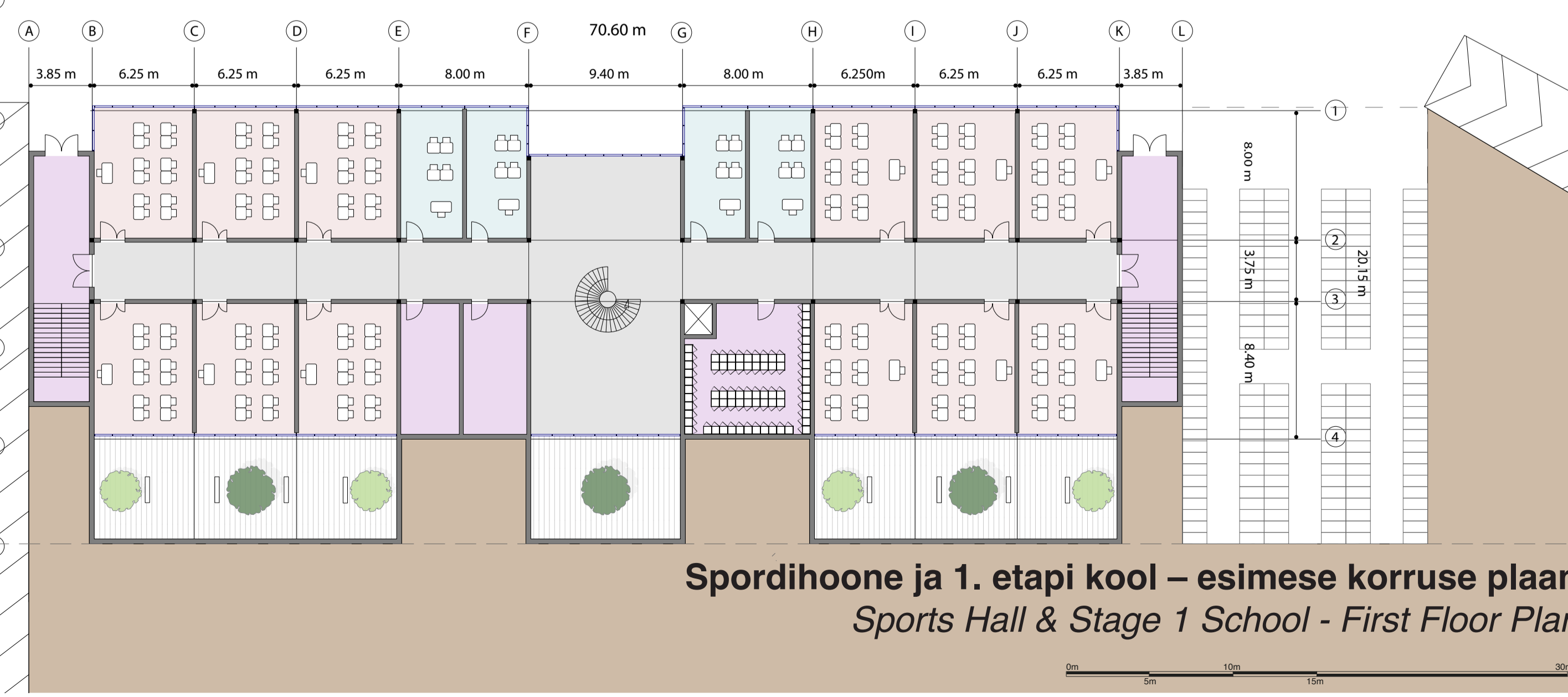
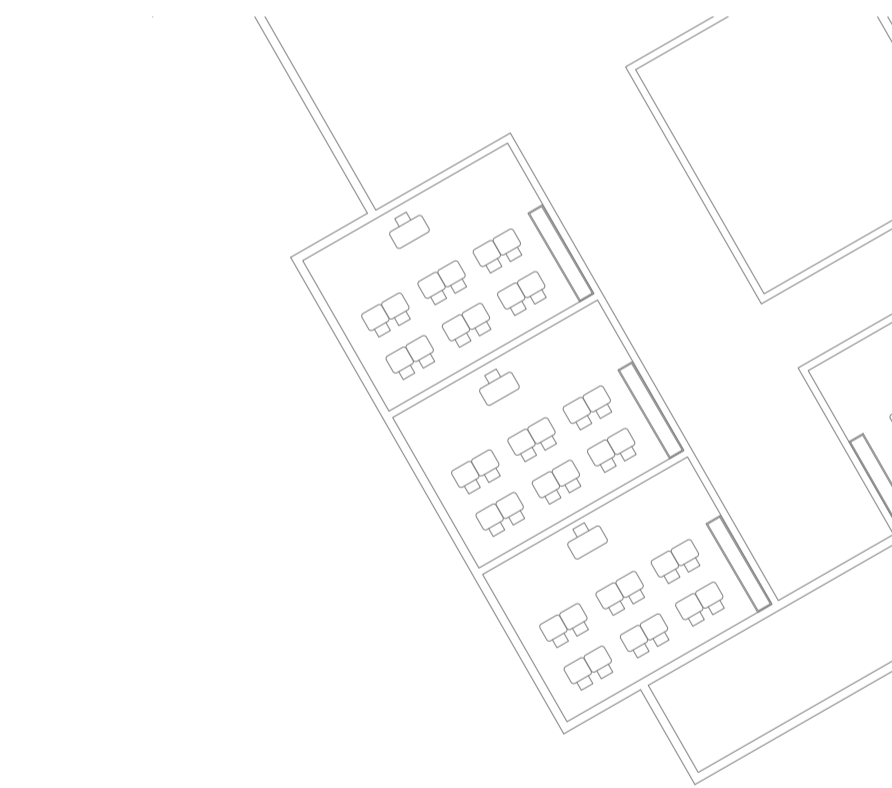


**Spordihoone ja 1. etapi kool – esimese korruse plaan**  
Sports Hall & Stage 1 School - Ground Floor Plan

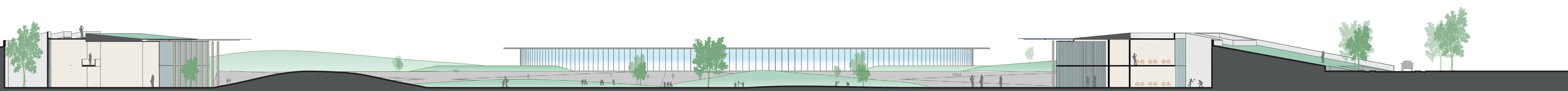
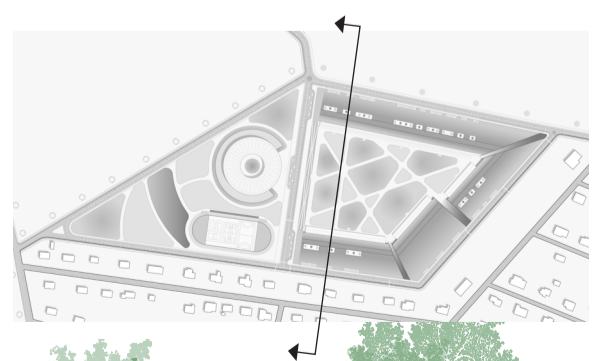
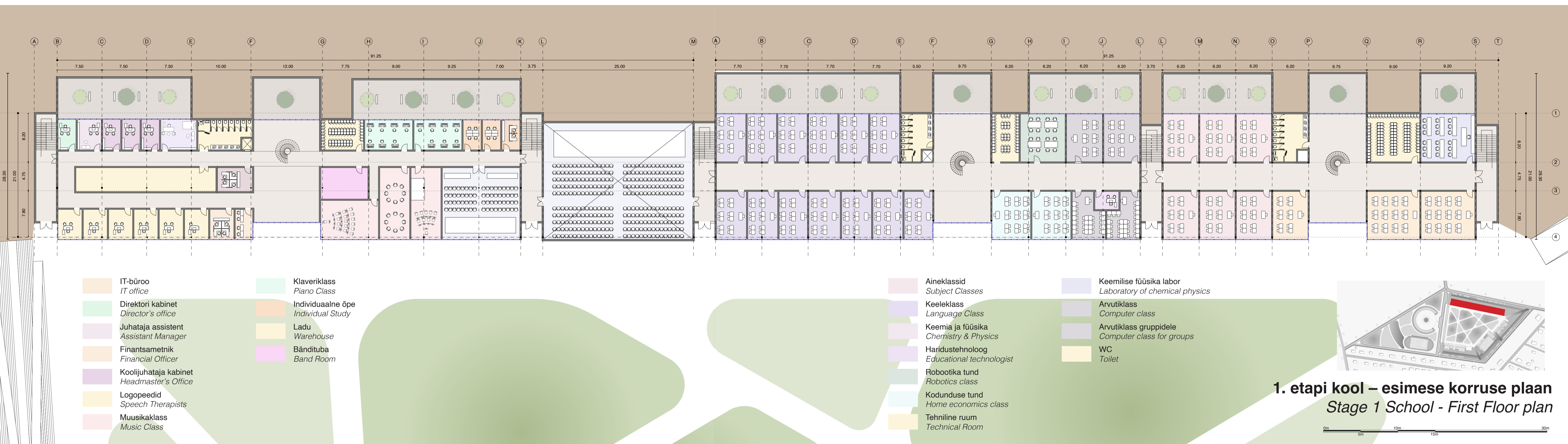
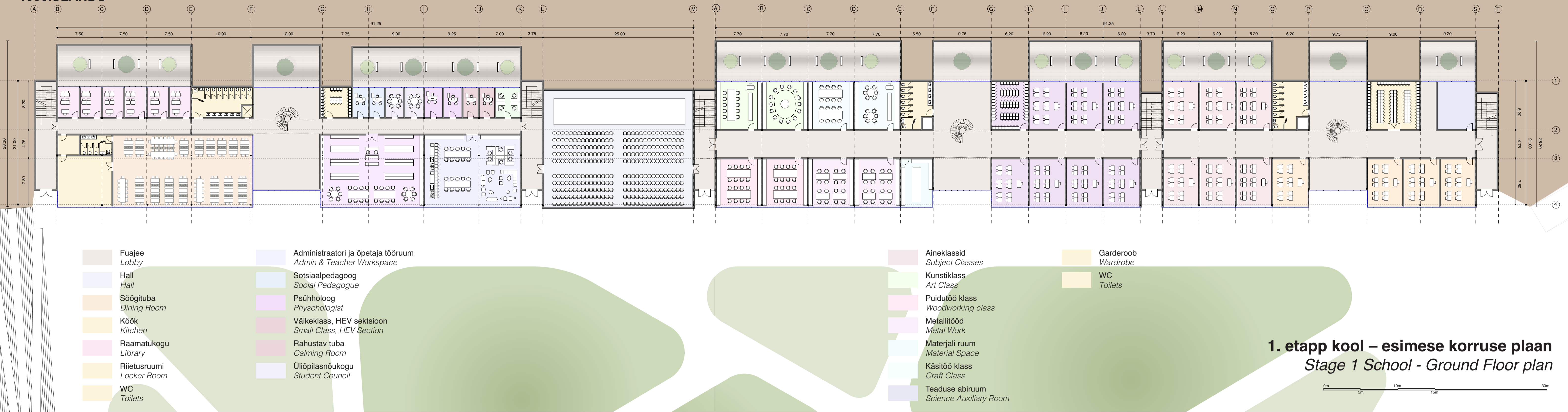


**1. etapi kool  
Stage 1 school**

- Koduklass  
Home Class
- Väike klass  
Small class
- Tiraaž  
Circulation
- Garderoob  
Wardrobe
- Koristusruumid  
Cleaning Rooms
- WC  
Toilets



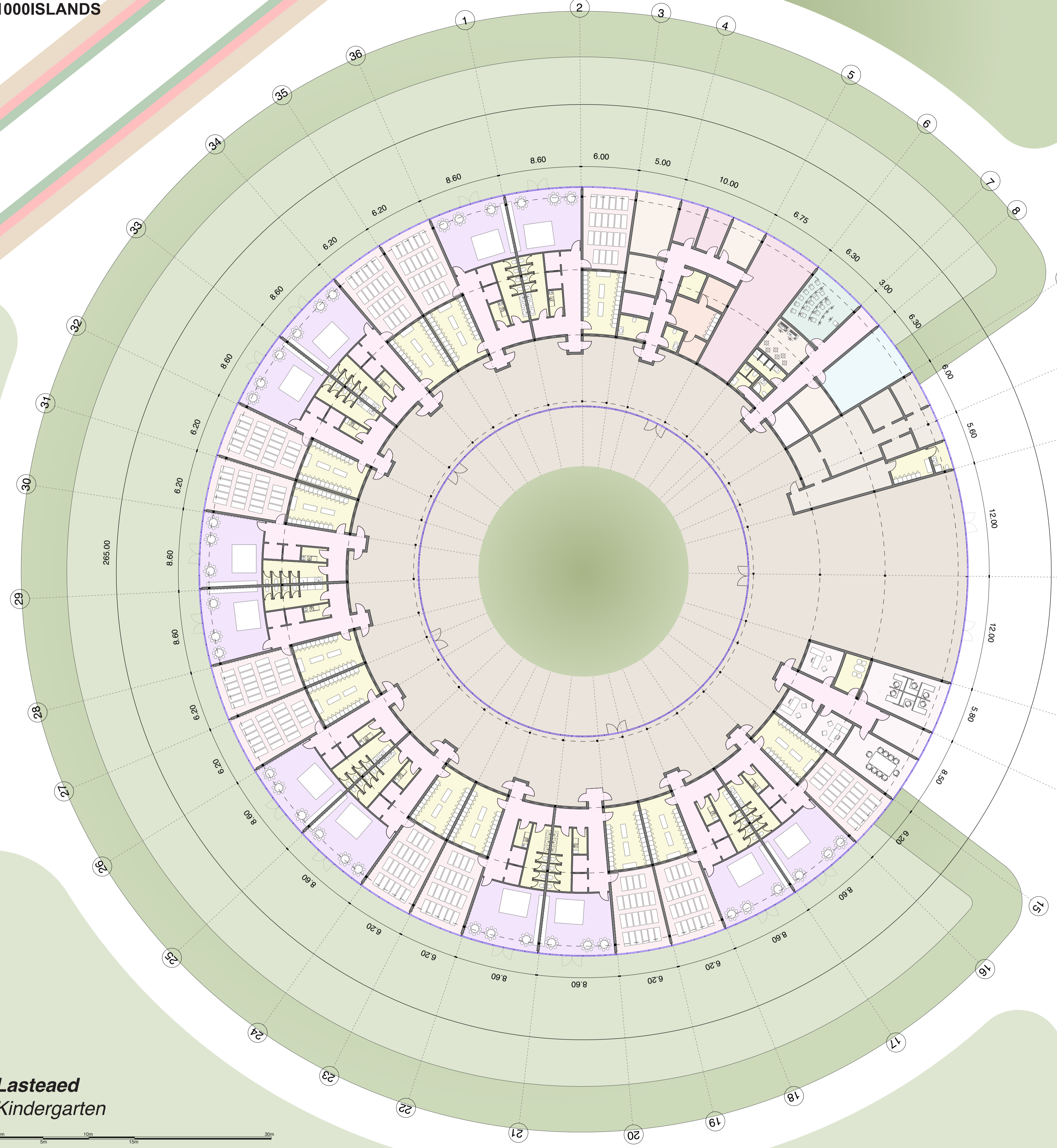
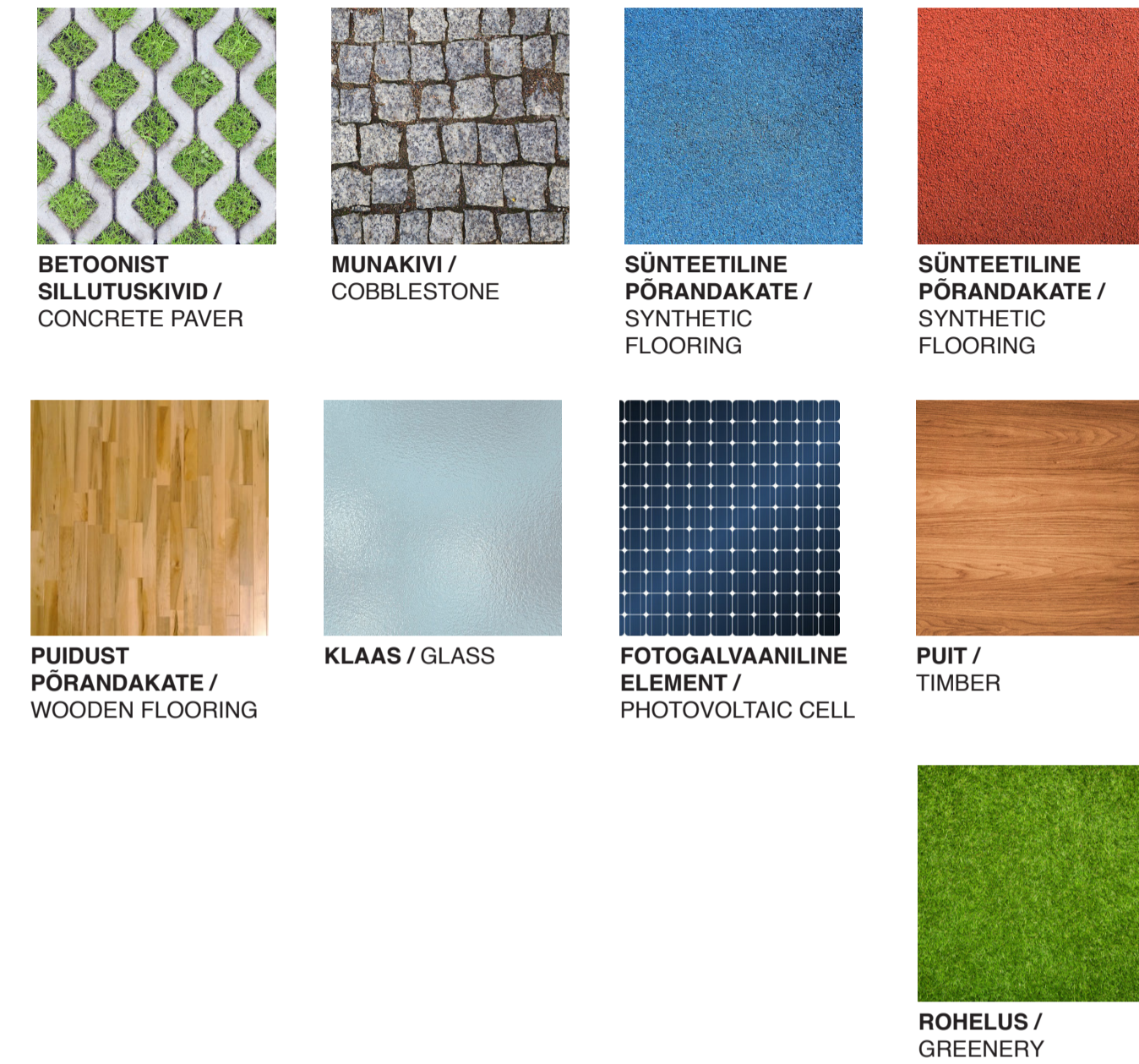
**Spordihoone ja 1. etapi kool – esimese korruse plaan**  
Sports Hall & Stage 1 School - First Floor Plan



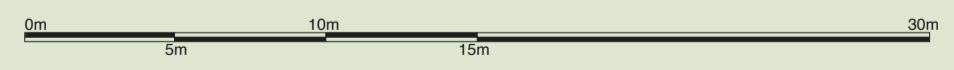
**Materjalipalett / Material palette**

Disain hõlmab ja propageerib kohaliku päritoluga materjalide kasutamist ning lammutamisel tekkinud ehitusjätmete ringlussevõttu. Konstruksioonelemendid on raudbetoonist ja terasest ilma kallite välisseadmeteta. Poorsed ja läbilaskvad pinnad ning elemendid võimaldavad säilitada isemajandavat haljasala. Visuaalse ebamugavuse vältimiseks on välja pakutud väga soe ja õrn värvipalett.

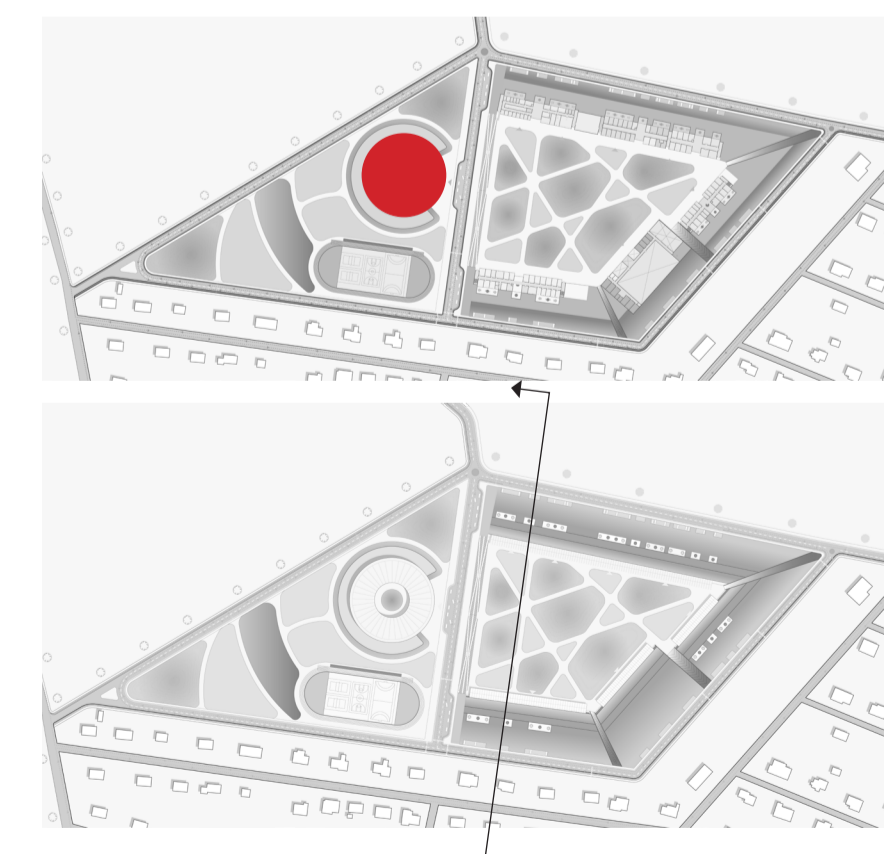
The design embraces and promotes the use of locally sourced material, and recycling the construction waste generated during demolition. Structure elements are of reinforced concrete and steel without involving any expensive out sourced machinery. Porous and permeable surfaces and elements allow maintaining a self-sustained green space. A very warm and gentle colour palette has been proposed, in order to avoid any visual discomfort.



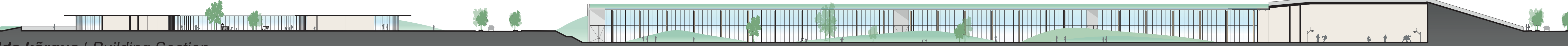
**Lasteaed  
Kindergarten**

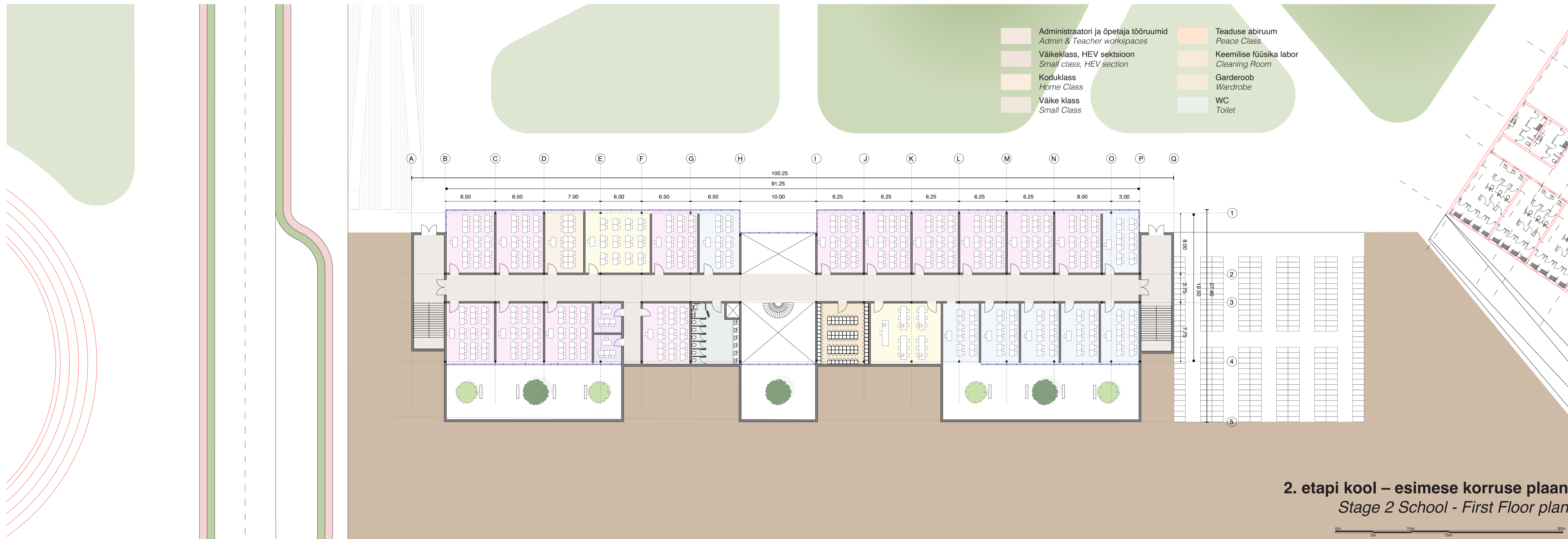


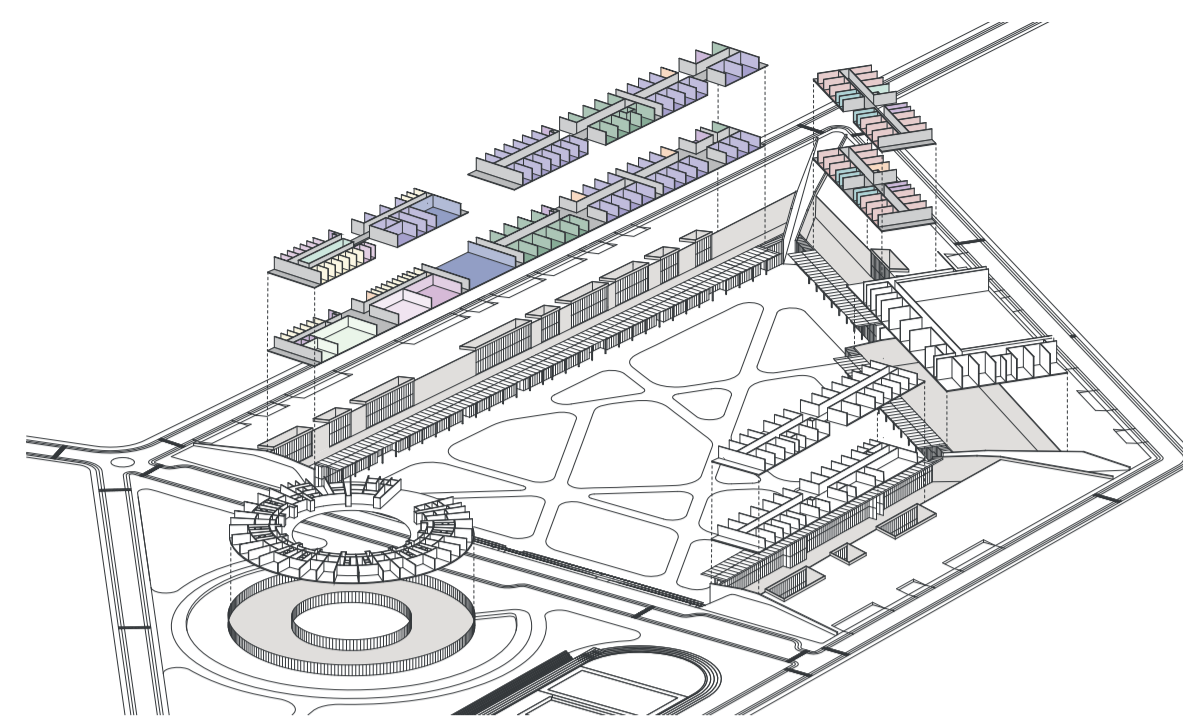
- Mängutuba  
Playroom
- Puhkealad  
Resting Areas
- Kööginurk  
Kitchenette
- WC  
Toilet
- Esik  
Hallway
- Garderoob  
Wardrobe
- Riidekuivatusala  
Clothes drying area
- Puhastusvahendid  
Cleaning Tools



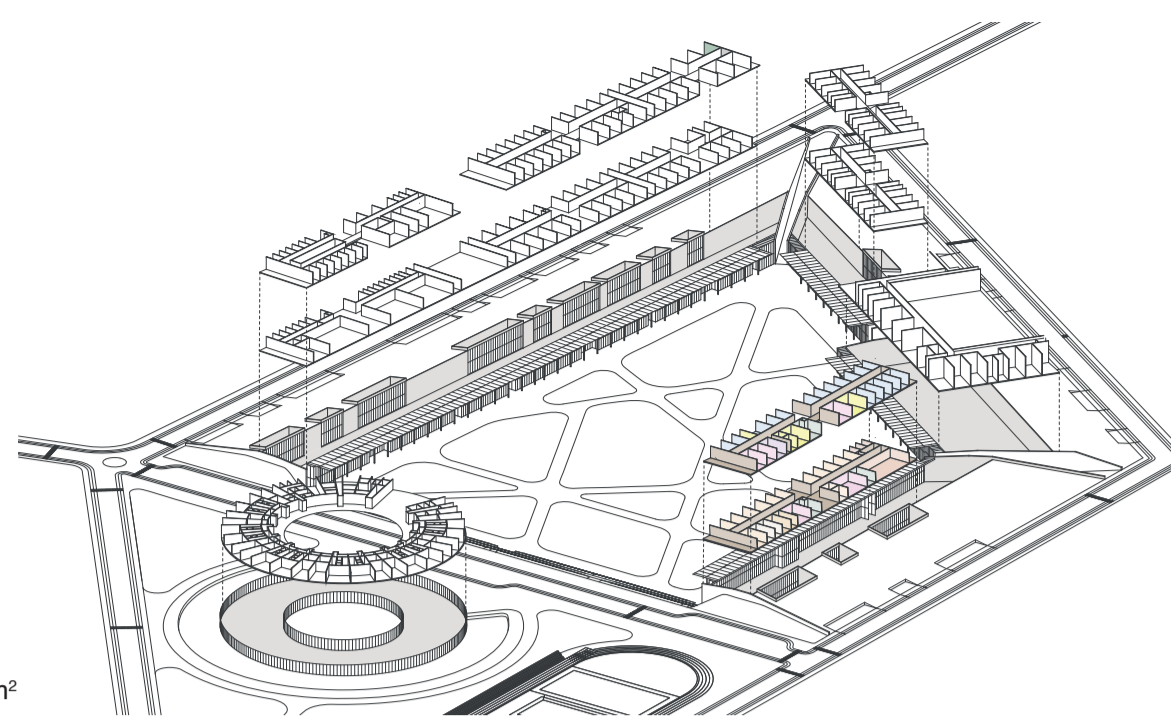
**Ida kõrgus / Building Section**



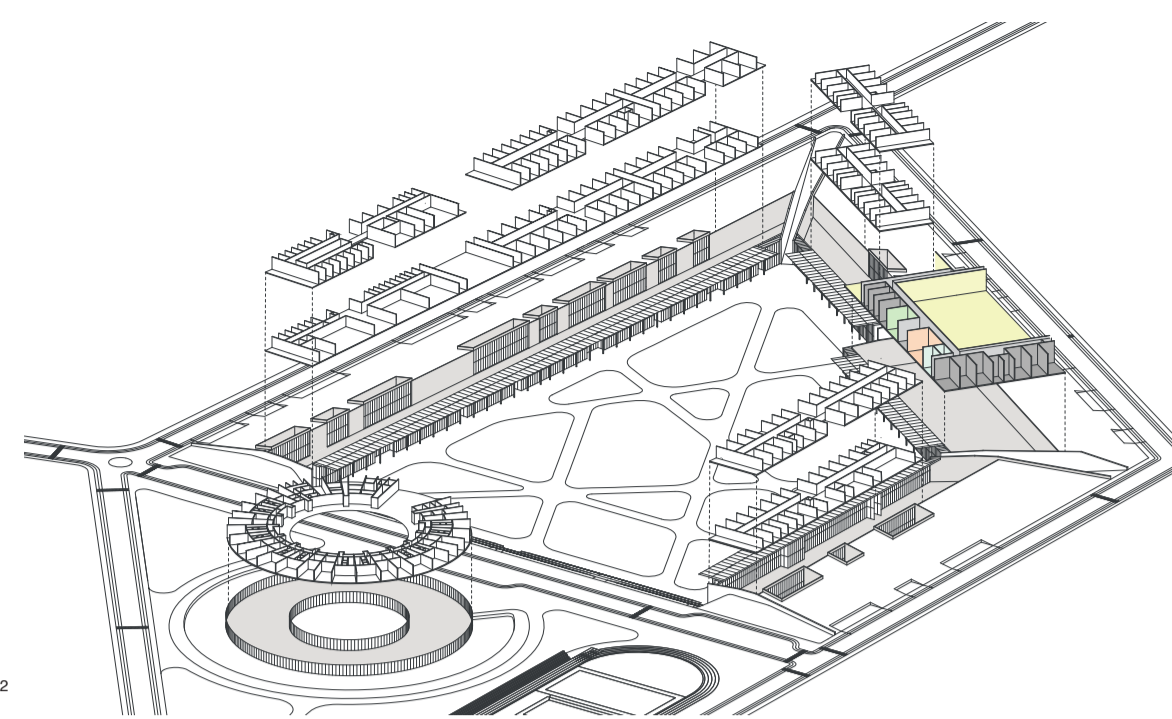




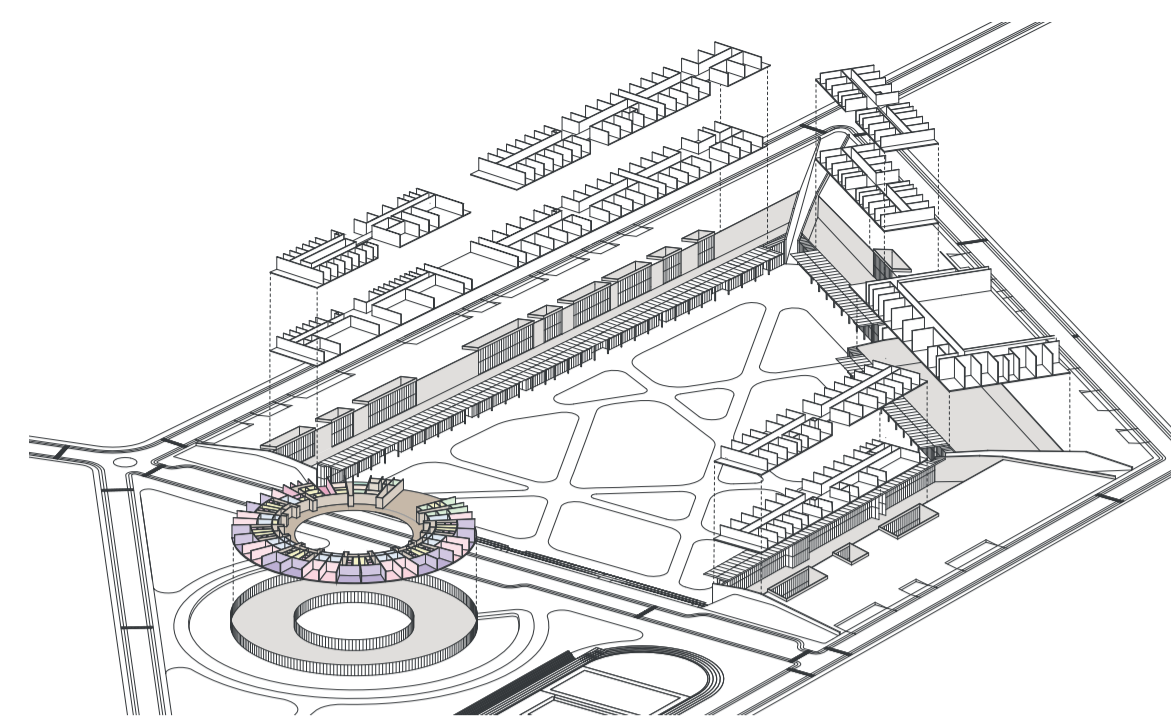
- 1. etapp Kool**  
Stage 1 School
- Aineklassid 2220 m<sup>2</sup>  
Subject classrooms
  - Töötodad 941 m<sup>2</sup>  
Workshops
  - Personali kontorid 335 m<sup>2</sup>  
Staff Offices
  - Tugiklassid 400 m<sup>2</sup>  
Support Classes
  - Raamatukogu 206 m<sup>2</sup>  
Library
  - Auditoorium 644 m<sup>2</sup>  
Auditorium
  - Sõõgituba ja köök 357 m<sup>2</sup>  
Dining & Kitchen
  - Peamine klassiruum 1152 m<sup>2</sup>  
Main Classroom
  - Riietusruumi 198 m<sup>2</sup>  
Locker Room
  - Tehniline ruum 137 m<sup>2</sup>  
Technical Room
  - Puhastusruum 46 m<sup>2</sup>  
Cleaning Room
  - Väike klassiruum 182 m<sup>2</sup>  
Small Classroom
  - Pesuruum 374 m<sup>2</sup>  
Washroom
  - Tiraaž 3931 m<sup>2</sup>  
Circulation



- 2. etapp Kool**  
Stage 2 School
- Aineklassid 974 m<sup>2</sup>  
Subject classrooms
  - Personali kontorid 170 m<sup>2</sup>  
Staff Offices
  - Riietusruumi 126 m<sup>2</sup>  
Locker Room
  - Tehniline ruum 95 m<sup>2</sup>  
Technical Room
  - Puhastusruum 24 m<sup>2</sup>  
Cleaning Room
  - Pesuruum 100 m<sup>2</sup>  
Washroom
  - Tiraaž 1131 m<sup>2</sup>  
Circulation
  - Peamine klassiruum 586 m<sup>2</sup>  
Main Classroom
  - Väike klassiruum 128 m<sup>2</sup>  
Small Classroom
  - Väike klass 53 m<sup>2</sup>  
Small Class
  - Laborid 186 m<sup>2</sup>  
Laboratories



- Spordirajatis**  
Sports Facilities
- Riietusruumid 407 m<sup>2</sup>  
Dressing Rooms
  - Jõusaal 119 m<sup>2</sup>  
Gym
  - Puhastusruum 9 m<sup>2</sup>  
Cleaning Room
  - Tehniline ruum 188 m<sup>2</sup>  
Technical Room
  - Spordihoon 1815 m<sup>2</sup>  
Sports Hall
  - Väike saal 495 m<sup>2</sup>  
Small Hall
  - Köök 79 m<sup>2</sup>  
Cafe
  - Inventari ruumid 77 m<sup>2</sup>  
Inventory Rooms
  - WC 30 m<sup>2</sup>  
Toilet
  - Tiraaž 567 m<sup>2</sup>  
Circulation



- Lasteaed**  
Kindergarten
- Tiraaž 1746 m<sup>2</sup>  
Circulation
  - Mängutuba 616 m<sup>2</sup>  
Playroom
  - Magamistuba 560 m<sup>2</sup>  
Sleeping Room
  - Riietusruumi 400 m<sup>2</sup>  
Locker Room
  - Pesuruum 206 m<sup>2</sup>  
Washroom
  - Säilitamine 122 m<sup>2</sup>  
Storage
  - Köök 156 m<sup>2</sup>  
Kitchen
  - Jõusaal 48 m<sup>2</sup>  
Gym
  - Muusikatuba 43 m<sup>2</sup>  
Music Room
  - Õpetajate tuba 158 m<sup>2</sup>  
Staff Room
  - Tehniline ruum 145 m<sup>2</sup>  
Technical Room

