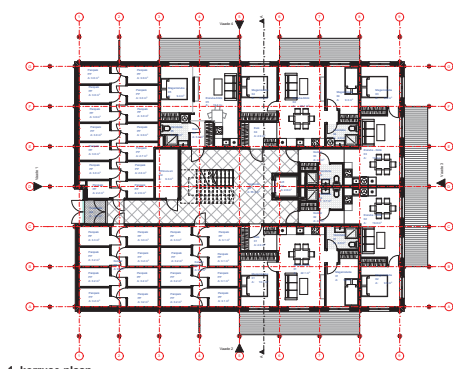


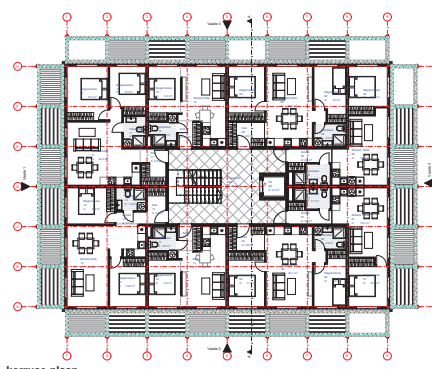


RAADIRAJA tn 2 ja 4 KORRUSELAMUTE ARHITEKTUURIKONKURSS

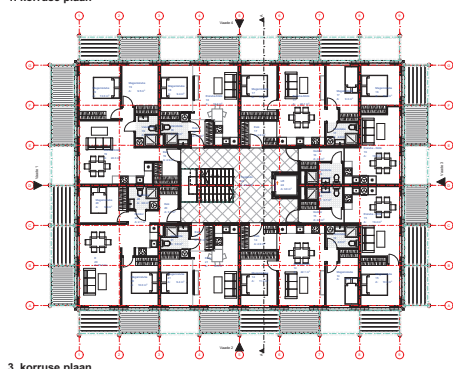




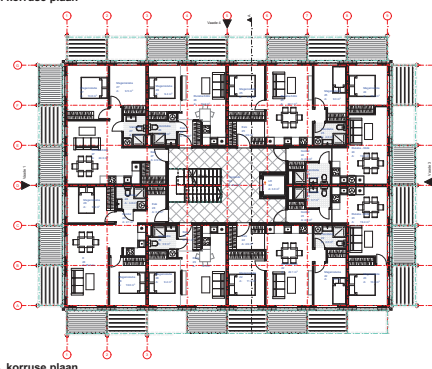
1. korruse plaan



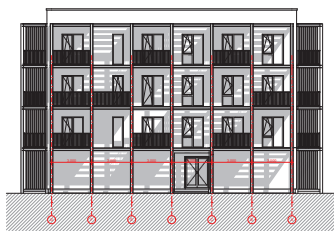
2. korruse plaan



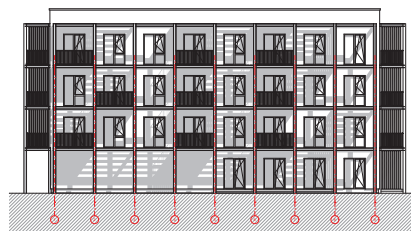
3. korruse plaan



4. korruse plaan



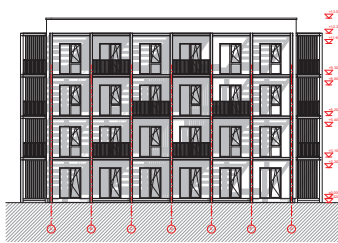
Vaade 1



Vaade 2

Kortermaja TÕÜP 1 tehnilised näitajad:

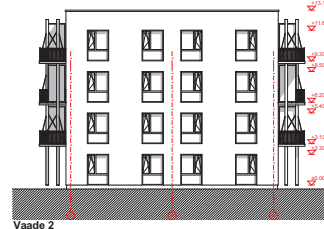
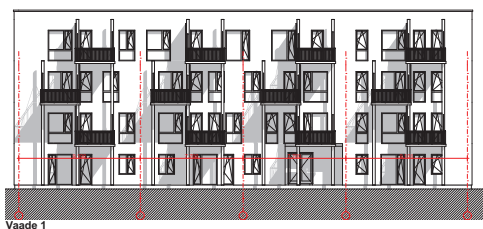
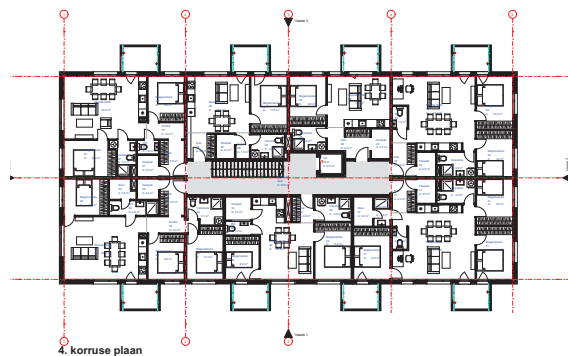
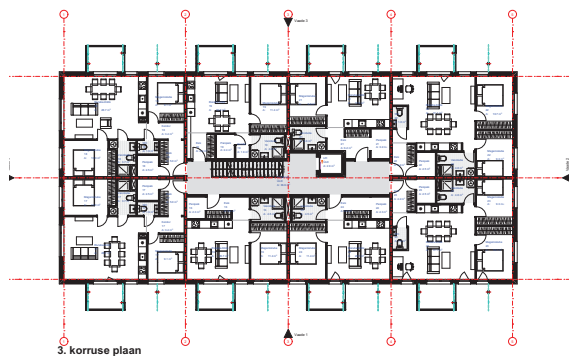
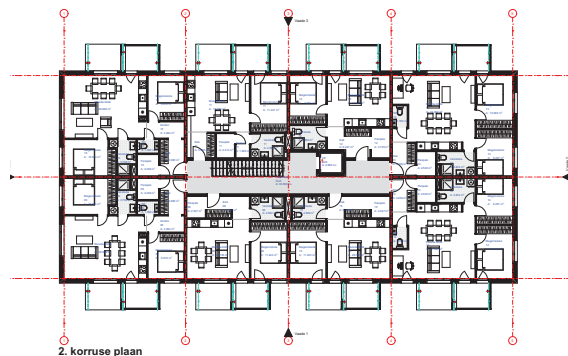
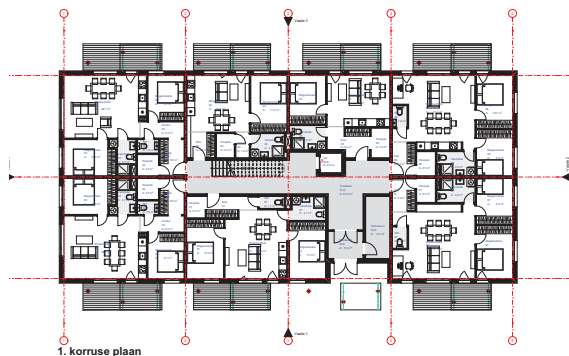
Ehitisealune pind:	617,0 m ²
Suletud brutopind:	1844,0 m ²
Suletud netopind:	1594,7 m ²
Korterte arv kinnistul:	29 korterit
sh.	
2-toalisi:	15
3-toalisi:	14
Hoone korruselisus:	4 korrust
sh. maa peal	4 korrust



Vaade 3



Vaade 4



Kortermaja TÜÜP 1 tehnilised näitajad:

Ehitisealune pind: 639,0 m²
 Suletud brutopind: 2180,0 m²
 Suletud netopind: 1876,1 m²

Kortrite arv kinnistul: 32 korterit
 sh
 2- toalisi: 15
 3-toalisi: 15
 4-toalisi: 2
 Hoone korruselisus: 4 korrust
 sh. maa peal 4 korrust

