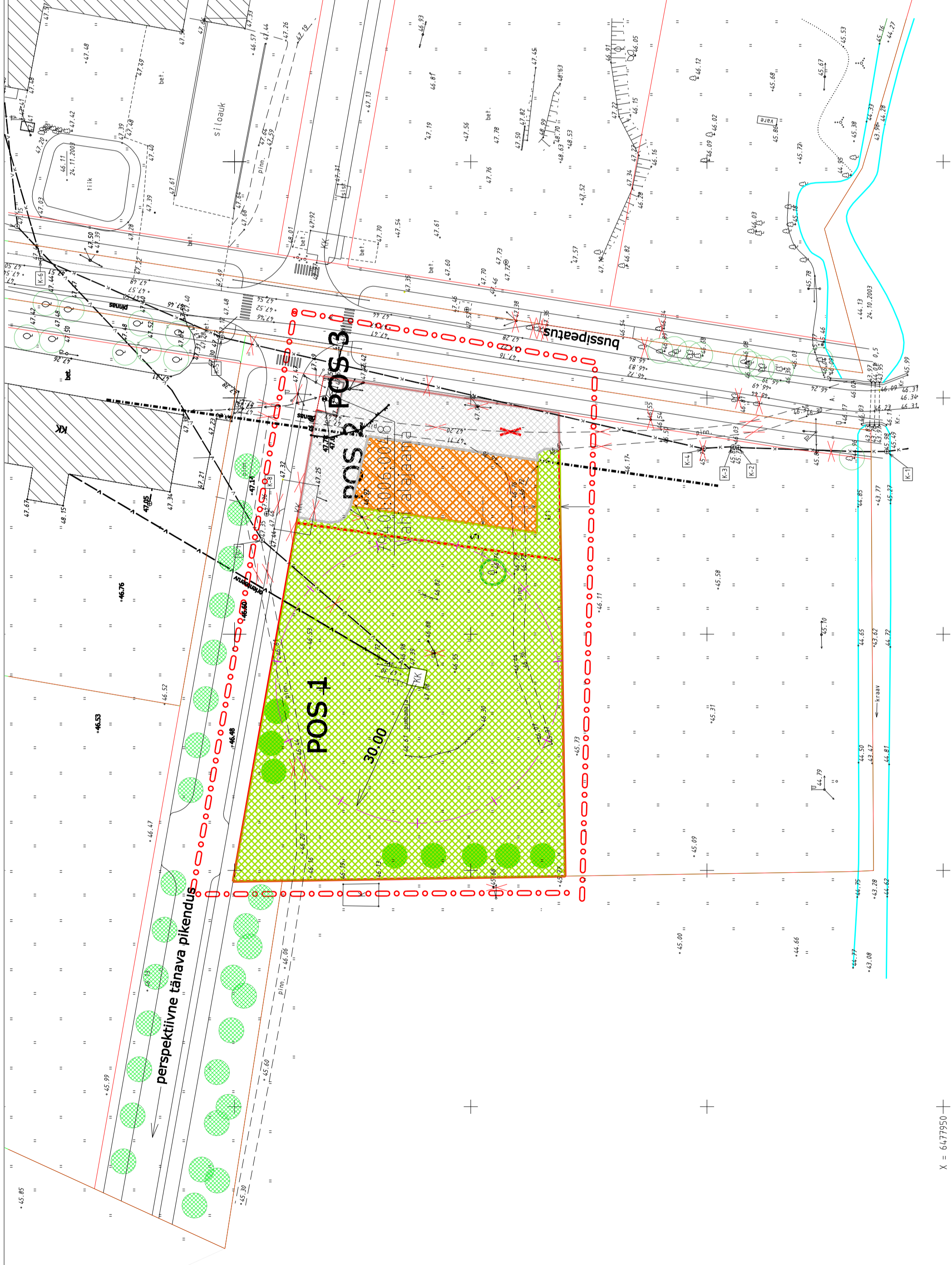



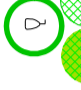






VAHI külas asuva KAEVU kinnistu DETAILPLANEERING



LEPPEMÄRGID:

-  planeeringuala piir
-  olemasoleva kinnistu piir
-  olemasolevad hooned
-  olemasolevad, säilitatavad puud
-  rajatav kõrghaljastus
-  madalhaljastus
-  hoonetusala
-  parkimisala

X = 6477950
Y = 6586650

Geodeetiline alusplaan Mario ja Savimäe kinnistute osas on koostatud OÜ Maamõõdukus poolt (töö nr 23x082) ning Moteodepoo kinnistu osas OÜ Brom Maamõõtmine poolt (töö nr I-174).

MTÜ TAEVASIKK
Tartu 50103 A. Kitzbergi 5-4
reg. nr. 80165755

Juhat. liige	H. Luigujõe	VAHI külas	Kaart	02/2005
Projekti juht	H. Luigujõe	asuva KAEVU kinnistu DETAILPLANEERING	6	6
		DETAILPLANEERINGU LAHENDUST ILLUSTREERIV JÕONIS	Mõõt 1: 1000	10/2005



Töö nr. 02/2005